

HPLC Application

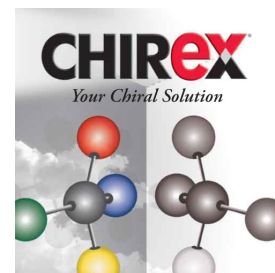
ID No.: 14100

Tartaric acid

Column: Chirex® 3126 (D)-penicillamine, LC Column 50 x 4.6 mm, Ea
Dimensions: 50 x 4.6 mm ID
Order No: 00B-3126-E0
Elution Type: Isocratic
Eluent A: 1 mM Copper (II) acetate and 0.05 M ammonium acetate in water, pH 4.5
Eluent B: Isopropanol
Gradient

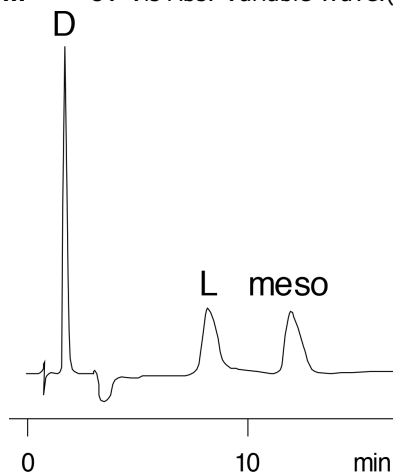
Step No.	Time (min)	Pct A	Pct B
1	0	85	15

Profile:
Flow Rate: 1 mL/min
Col. Temp.: 60 °C
Detection: UV-Vis Abs.-Variable Wave.(UV) @ 280 nm (ambient)



Products used in this application:

CHIREX®



$$\alpha = 6.44$$

ANALYTES:

- 1 D-Tartaric acid
- 2 L-Tartaric acid

