

# HPLC Application

ID No.: 14160

## Normetanephine

**Column:** Chirex<sup>®</sup> 3126 (D)-penicillamine, LC Column 150 x 4.6 mm, Ea

**Dimensions:** 150 x 4.6 mm ID

**Order No:** 00F-3126-E0

**Elution Type:** Isocratic

**Eluent A:** 5 mM Copper (II) acetate in water [pH 6.0]

**Gradient**

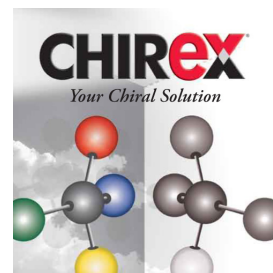
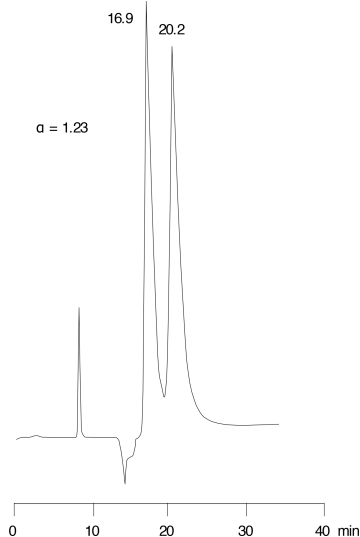
Step No.	Time (min)	Pct A
1	0	100

**Profile:**

**Flow Rate:** 0.5 mL/min

**Col. Temp.:** ambient

**Detection:** UV-Vis Abs.-Variable Wave.(UV) @ 280 nm (ambient)



Products used in this application:

**CHIREX**<sup>®</sup>

### ANALYTES:

- 1 Normetanephine  
Retention Time: 16.9 min
- 2 Normetanephine  
Retention Time: 20.2 min

