

HPLC Application

ID No.: 14184

Proteins on Jupiter C4 in 10mM TFA

Column: Jupiter[®] 5 μ m C4 300 Å, LC Column 250 x 4.6 mm, Ea

Dimensions: 250 x 4.6 mm ID

Order No: 00G-4167-E0

Elution Type: Gradient

Eluent A: Water with 10mM TFA

Eluent B: Acetonitrile with 10mM TFA

Gradient Profile:	Step No.	Time (min)	Pct A	Pct B
	1	0	75	25
	2	20	5	95

Flow Rate: 1 mL/min

Col. Temp.: 35 °C

Detection: UV-Vis Abs.-Variable Wave.(UV) @ 214 nm (35 °C)

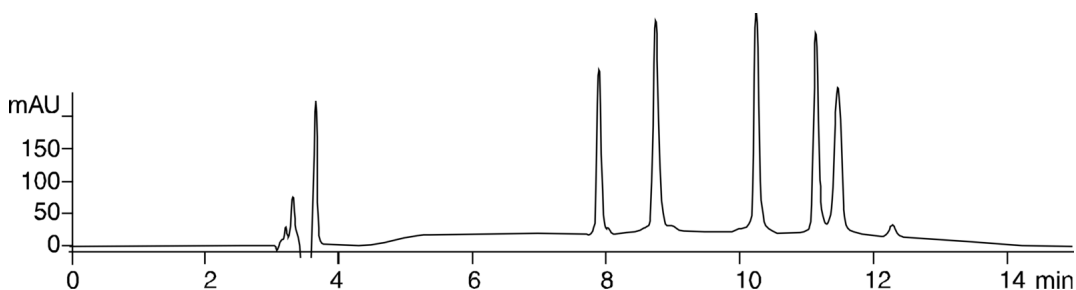
Analyst Note: SecurityGuard[™] Guard Cartridge System extends column lifetime.

- SecurityGuard Cartridges, Widedpore C4 4 x 3.0mm, 10/Pk Part No.: AJ0-4330

- Holder Part No.: KJ0-4282



Products used in this application:



ANALYTES:

- 1 Insulin
- 2 Trypsinogen
- 3 Lactalbumin
- 4 Myoglobin
- 5 Carbonic anhydrase

