

# HPLC Application

ID No.: 14187

## Proteins on Jupiter C4 in 1.25mM TFA

**Column:** Jupiter<sup>®</sup> 5  $\mu$ m C4 300 Å, LC Column 250 x 4.6 mm, Ea

**Dimensions:** 250 x 4.6 mm ID

**Order No:** 00G-4167-E0

**Elution Type:** Gradient

**Eluent A:** Water with 1.25mM TFA

**Eluent B:** Acetonitrile with 1.25mM TFA

Gradient Profile:	Step No.	Time (min)	Pct A	Pct B
	1	0	75	25
	2	20	5	95

**Flow Rate:** 1 mL/min

**Col. Temp.:** ambient

**Detection:** UV-Vis Abs.-Variable Wave.(UV) @ 214 nm (ambient)

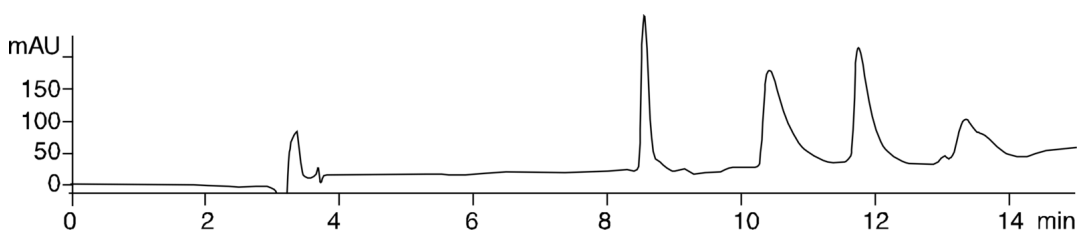
**Analyst Note:** SecurityGuard<sup>™</sup> Guard Cartridge System extends column lifetime.

- SecurityGuard Cartridges, Widedpore C4 4 x 3.0mm, 10/Pk Part No.: AJ0-4330

- Holder Part No.: KJ0-4282



Products used in this application:



### ANALYTES:

- 1 Insulin
- 2 Trypsinogen
- 3 Lactalbumin
- 4 Myoglobin

