

# HPLC Application

ID No.: 14189

## Basic peptides on Jupiter C18 in 5mM TFA

**Column:** Jupiter<sup>®</sup> 5  $\mu$ m C18 300 Å, LC Column 250 x 4.6 mm, Ea

**Dimensions:** 250 x 4.6 mm ID

**Order No:** 00G-4053-E0

**Elution Type:** Gradient

**Eluent A:** Water with 5mM TFA

**Eluent B:** Acetonitrile with 5mM TFA

Gradient Profile:	Step No.	Time (min)	Pct A	Pct B
	1	0	90	10
	2	20	55	45

**Flow Rate:** 1 mL/min

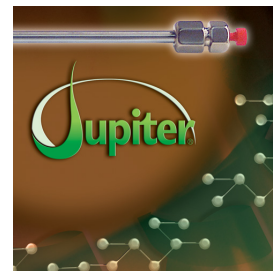
**Col. Temp.:** 35 °C

**Detection:** UV-Vis Abs.-Variable Wave.(UV) @ 210 nm (ambient)

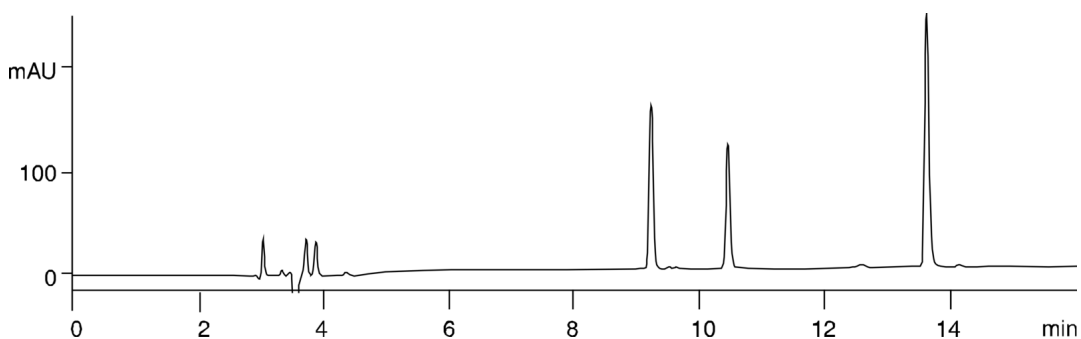
**Analyst Note:** SecurityGuard<sup>™</sup> Guard Cartridge System extends column lifetime.

- SecurityGuard Cartridges, Widedpore C18 4 x 3.0mm, 10/Pk Part No.: AJ0-4321

- Holder Part No.: KJ0-4282



Products used in this application:



### ANALYTES:

- 1 Basic peptide
- 2 Basic peptide
- 3 Basic peptides 3+4

