

HPLC Application

ID No.: 14191

Basic peptides on Jupiter C4 in 1.25mM TFA

Column: Jupiter[®] 5 μ m C18 300 Å, LC Column 250 x 4.6 mm, Ea

Dimensions: 250 x 4.6 mm ID

Order No: 00G-4053-E0

Elution Type: Gradient

Eluent A: Water with 1.25mM TFA

Eluent B: Acetonitrile with 1.25mM TFA

Gradient Profile:	Step No.	Time (min)	Pct A	Pct B
	1	0	90	10
	2	20	55	45

Flow Rate: 1 mL/min

Col. Temp.: 35 °C

Detection: UV-Vis Abs.-Variable Wave.(UV) @ 210 nm (ambient)

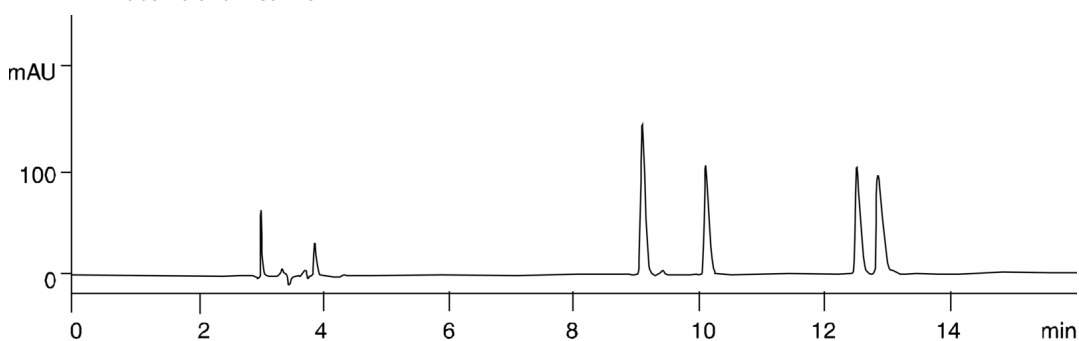
Analyst Note: SecurityGuard[™] Guard Cartridge System extends column lifetime.

- SecurityGuard Cartridges, Widedpore C18 4 x 3.0mm, 10/Pk Part No.: AJ0-4321

- Holder Part No.: KJ0-4282



Products used in this application:



ANALYTES:

- 1 Basic peptide
- 2 Basic peptide
- 3 Basic peptide 4
- 4 Basic peptide 3

