

Diazepam and related compounds on Synergi Polar-RP in Methanol

Column: Synergi™ 4 µm Polar-RP 80 Å, LC Column 150 x 4.6 mm, Ea

Dimensions: 150 x 4.6 mm ID

Order No: 00F-4336-E0

Elution Type: Isocratic

Eluent A: Methanol

Eluent B: 20mM Potassium phosphate pH 2.5

Gradient Profile:	Step No.	Time (min)	Pct A	Pct B
	1	0	70	30

Flow Rate: 1.5 mL/min

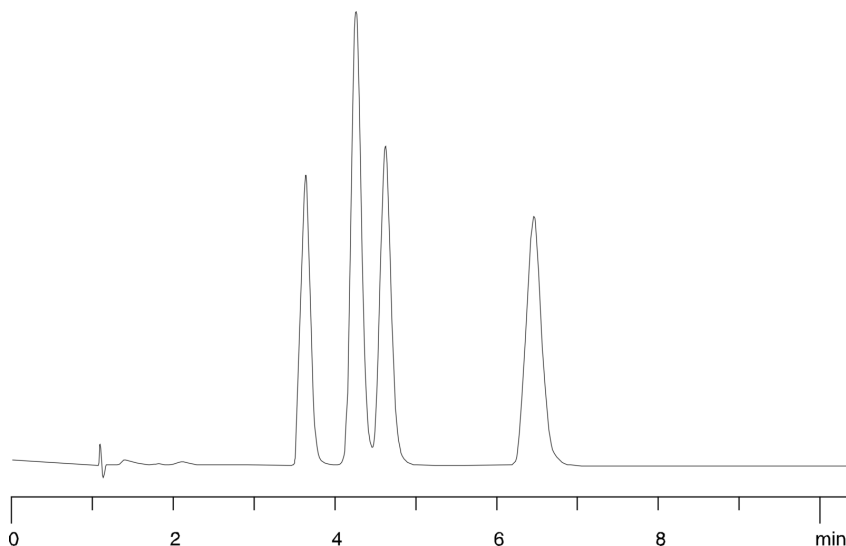
Col. Temp.: 30 °C

Detection: UV-Vis Abs.-Variable Wave.(UV) @ 254 nm (ambient)

Analyst Note: SecurityGuard™ Guard Cartridge System extends column lifetime.

- SecurityGuard Cartridges, POLAR-RP 4 x 3.0mm, 10/Pk Part No.: AJ0-6076

- Holder Part No.: KJ0-4282



ANALYTES:

- 1 Clonazepam
- 2 Desmethyldiazepam
- 3 Temazepam
- 4 Diazepam

