

HPLC Application

ID No.: 14200

Lactoglobulin tryptic map on Luna C18(2) - 0.05% TFA

Column: Luna® 5 µm C18(2) 100 Å, LC Column 250 x 4.6 mm, Ea

Dimensions: 250 x 4.6 mm ID

Order No: 00G-4252-E0

Elution Type: Gradient

Eluent A: Water with 0.05% TFA

Eluent B: Acetonitrile with 0.05% TFA

| Gradient Profile: | Step No. | Time (min) | Pct A | Pct B |
|--------------------------|-----------------|-------------------|--------------|--------------|
| | 1 | 0 | 97 | 3 |
| | 2 | 3 | 97 | 3 |
| | 3 | 90 | 60 | 40 |

Flow Rate: 1 mL/min

Col. Temp.: ambient

Detection: UV-Vis Abs.-Variable Wave.(UV) @ 210 nm (ambient)

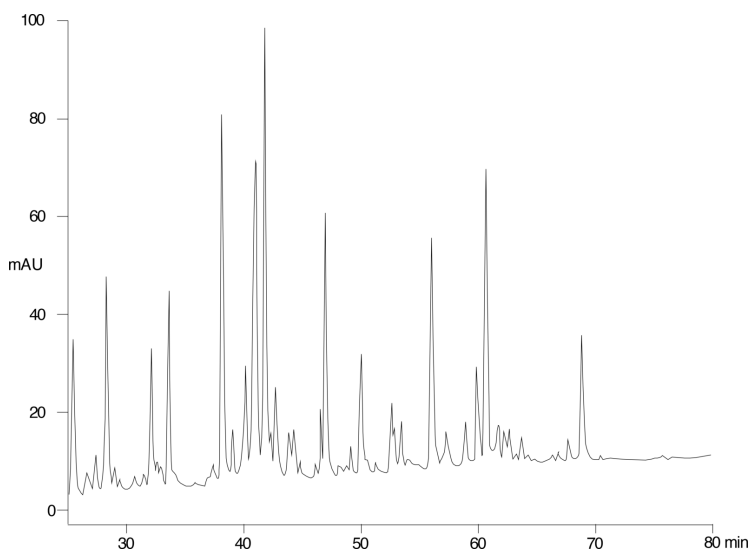
Analyst Note: SecurityGuard™ Guard Cartridge System extends column lifetime.

- SecurityGuard Cartridges, C18 4 x 3.0mm, 10/Pk Part No.: AJ0-4287

- Holder Part No.: KJ0-4282



Products used in this application:



ANALYTES:

1 Protein

