

# HPLC Application

ID No.: 14206

## Lactoglobulin tryptic map on Jupiter Proteo - 0.0125% TFA

**Column:** Jupiter<sup>®</sup> 4  $\mu$ m Proteo 90  $\text{\AA}$ , LC Column 250 x 4.6 mm, Ea

**Dimensions:** 250 x 4.6 mm ID

**Order No:** 00G-4396-E0

**Elution Type:** Gradient

**Eluent A:** Water with 0.0125% TFA

**Eluent B:** Acetonitrile with 0.0125% TFA

| Gradient Profile: | Step No. | Time (min) | Pct A | Pct B |
|-------------------|----------|------------|-------|-------|
|                   | 1        | 0          | 97    | 3     |
|                   | 2        | 3          | 97    | 3     |
|                   | 3        | 90         | 60    | 40    |

**Flow Rate:** 1 mL/min

**Col. Temp.:** ambient

**Detection:** UV-Vis Abs.-Variable Wave.(UV) @ 210 nm (ambient)

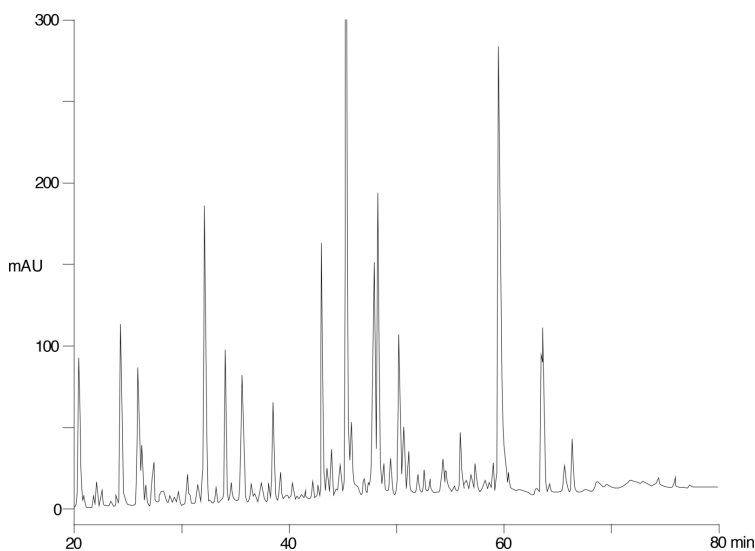
**Analyst Note:** SecurityGuard<sup>™</sup> Guard Cartridge System extends column lifetime.

- SecurityGuard Cartridges, C12 4 x 3.0mm, 10/Pk Part No.: AJ0-6074

- Holder Part No.: KJ0-4282



Products used in this application:



### ANALYTES:

1 Protein

