

HPLC Application

ID No.: 14210

Caffeine in Tea - Synergi Hydro-RP

Column: Synergi[™] 4 μ m Hydro-RP 80 \AA , LC Column 150 x 4.6 mm, Ea

Dimensions: 150 x 4.6 mm ID

Order No: 00F-4375-E0

Elution Type: Isocratic

Eluent A: 20mM Potassium phosphate, pH 2.5

Eluent B: Acetonitrile

Gradient Profile:	Step No.	Time (min)	Pct A	Pct B
	1	0	90	10

Flow Rate: 1.5 mL/min

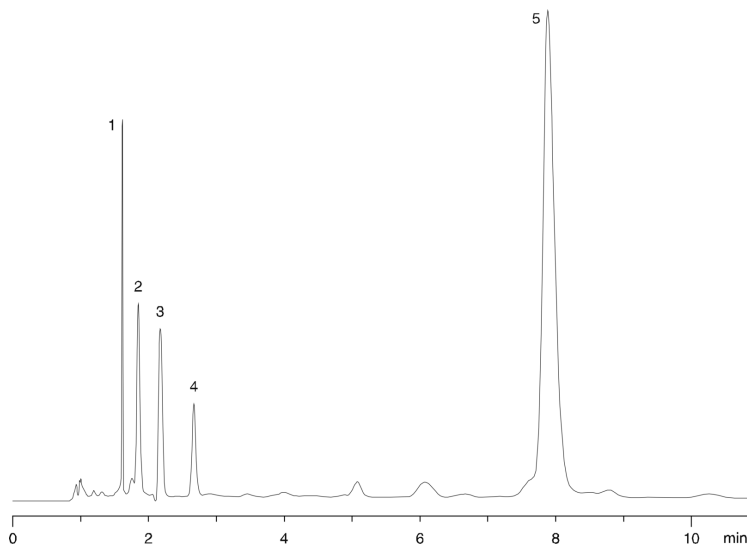
Col. Temp.: ambient

Detection: UV-Vis Abs.-Variable Wave.(UV) @ 273 nm (ambient)

Analyst Note: SecurityGuard[™] Guard Cartridge System extends column lifetime.

- SecurityGuard Cartridges, AQ C18 4 x 3.0mm, 10/Pk Part No.: AJ0-7511

- Holder Part No.: KJ0-4282



ANALYTES:

- 1 unknown
- 2 unknown
- 3 unknown
- 4 unknown
- 5 Caffeine

