

# HPLC Application

ID No.: 14211

## Caffeine in Tea - Synergi Polar-RP

**Column:** Synergi<sup>™</sup> 4  $\mu$ m Polar-RP 80  $\text{\AA}$ , LC Column 150 x 4.6 mm, Ea

**Dimensions:** 150 x 4.6 mm ID

**Order No:** 00F-4336-E0

**Elution Type:** Isocratic

**Eluent A:** 20mM Potassium phosphate pH 2.5

**Eluent B:** Acetonitrile

Gradient Profile:	Step No.	Time (min)	Pct A	Pct B
	1	0	90	10

**Flow Rate:** 1.5 mL/min

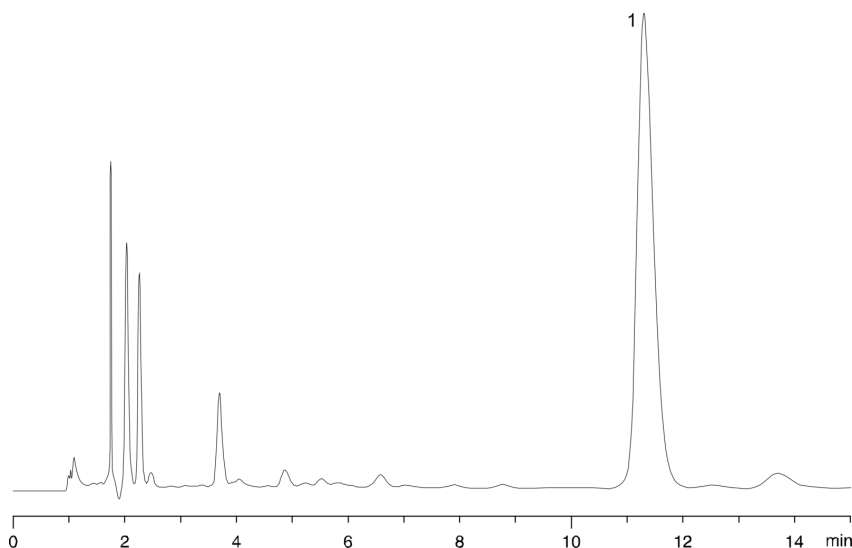
**Col. Temp.:** ambient

**Detection:** UV-Vis Abs.-Variable Wave.(UV) @ 273 nm (ambient)

**Analyst Note:** SecurityGuard<sup>™</sup> Guard Cartridge System extends column lifetime.

- SecurityGuard Cartridges, POLAR-RP 4 x 3.0mm, 10/Pk Part No.: AJ0-6076

- Holder Part No.: KJ0-4282



### ANALYTES:

1 Caffeine

