

HPLC Application

ID No.: 14213

Caffeine and related compounds - Synergi Max-RP

Column: Synergi[™] 4 μ m Max-RP 80 Å, LC Column 150 x 4.6 mm, Ea

Dimensions: 150 x 4.6 mm ID

Order No: 00F-4337-E0

Elution Type: Isocratic

Eluent A: 20mM Potassium phosphate pH 2.5

Eluent B: Acetonitrile

Gradient Profile:	Step No.	Time (min)	Pct A	Pct B
	1	0	90	10

Flow Rate: 1.5 mL/min

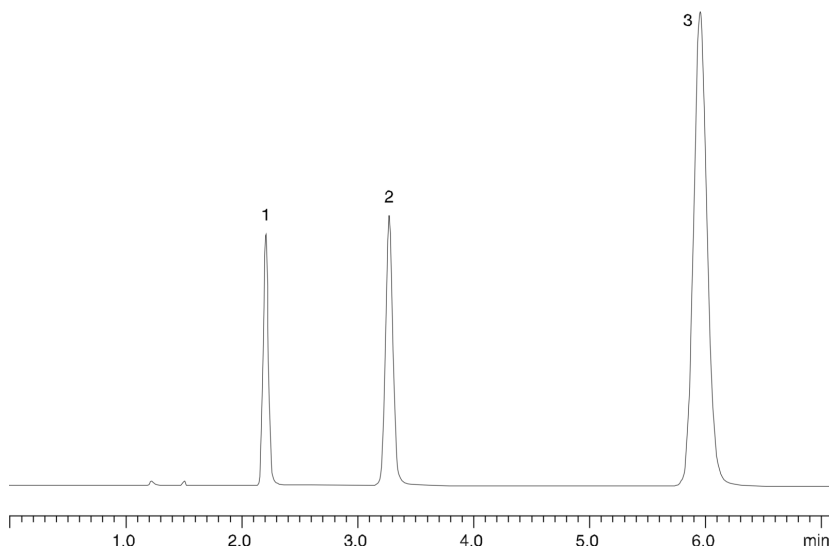
Col. Temp.: ambient

Detection: UV-Vis Abs.-Variable Wave.(UV) @ 273 nm (ambient)

Analyst Note: SecurityGuard[™] Guard Cartridge System extends column lifetime.

- SecurityGuard Cartridges, C12 4 x 3.0mm, 10/Pk Part No.: AJ0-6074

- Holder Part No.: KJ0-4282



ANALYTES:

- 1** Theobromine
- 2** Theophylline
- 3** Caffeine

