

HPLC Application

ID No.: 14224

Aniline derivatives on Synergi Max-RP

Column: Synergi[™] 4 μ m Max-RP 80 Å, LC Column 250 x 4.6 mm, Ea

Dimensions: 250 x 4.6 mm ID

Order No: 00G-4337-E0

Elution Type: Gradient

Eluent A: Water with 0.1% H₃PO₄

Eluent B: Acetonitrile with 0.1% H₃PO₄

Gradient Profile:	Step No.	Time (min)	Pct A	Pct B
	1	0	95	5
	2	30	5	95

Flow Rate: 1.5 mL/min

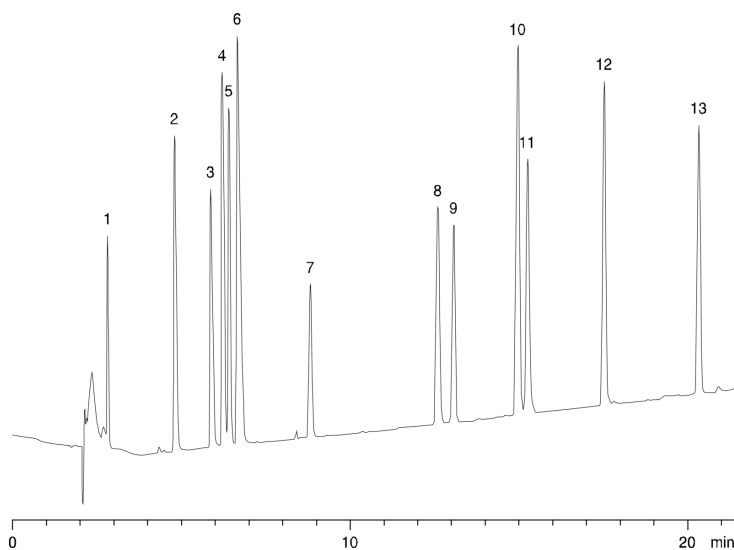
Col. Temp.: ambient

Detection: UV-Vis Abs.-Variable Wave.(UV) @ 254 nm (ambient)

Analyst Note: SecurityGuard[™] Guard Cartridge System extends column lifetime.

- SecurityGuard Cartridges, C12 4 x 3.0mm, 10/Pk Part No.: AJ0-6074

- Holder Part No.: KJ0-4282



Aniline derivatives on Synergi Max-RP

ANALYTES:

- 1** Aniline
- 2** N-Ethylaniline
- 3** N,N-Diethylaniline
- 4** 2-Ethylaniline
- 5** 3-Ethylaniline
- 6** 4-Ethylaniline
- 7** 4-Chloroaniline
- 8** 3-Nitroaniline
- 9** 4-Nitroaniline
- 10** 2-Nitroaniline
- 11** 2-Chloroaniline
- 12** 3,4-Dichloroaniline
- 13** 2,5-Dichloroaniline

