

## Panax Ginseng on Synergi Max-RP

**Column:** Synergi™ 4 µm Max-RP 80 Å, LC Column 150 x 4.6 mm, Ea

**Dimensions:** 150 x 4.6 mm ID

**Order No:** 00F-4337-E0

**Elution Type:** Gradient

**Eluent A:** Water

**Eluent B:** Acetonitrile

Gradient Profile:	Step No.	Time (min)	Pct A	Pct B
	1	0	85	15
	2	70	65	35

**Flow Rate:** 1.5 mL/min

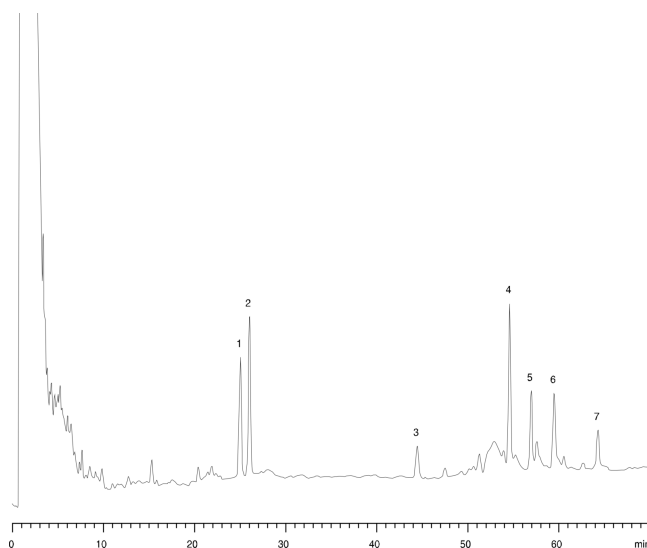
**Col. Temp.:** ambient

**Detection:** UV-Vis Abs.-Variable Wave.(UV) @ 205 nm (ambient)

**Analyst Note:** SecurityGuard™ Guard Cartridge System extends column lifetime.

- SecurityGuard Cartridges, C12 4 x 3.0mm, 10/Pk Part No.: AJ0-6074

- Holder Part No.: KJ0-4282



### ANALYTES:

- 1 Ginsenoside Rg1
- 2 Ginsenoside Re
- 3 Ginsenoside Rf
- 4 Ginsenoside Rb1
- 5 Ginsenoside Rc
- 6 Ginsenoside Rb2
- 7 Ginsenoside Rd

