

HPLC Application

ID No.: 14263

EPA Method 8330 - Explosives on Luna C18(2)

Column: Luna® 5 µm C18(2) 100 Å, LC Column 250 x 4.6 mm, Ea

Dimensions: 250 x 4.6 mm ID

Order No: 00G-4252-E0

Elution Type: Isocratic

Eluent A: Methanol

Eluent B: Water

Gradient Profile:	Step No.	Time (min)	Pct A	Pct B
	1	0	55	45

Flow Rate: 1 mL/min

Col. Temp.: 35 °C

Detection: UV-Vis Abs.-Variable Wave.(UV) @ 254 nm (ambient)

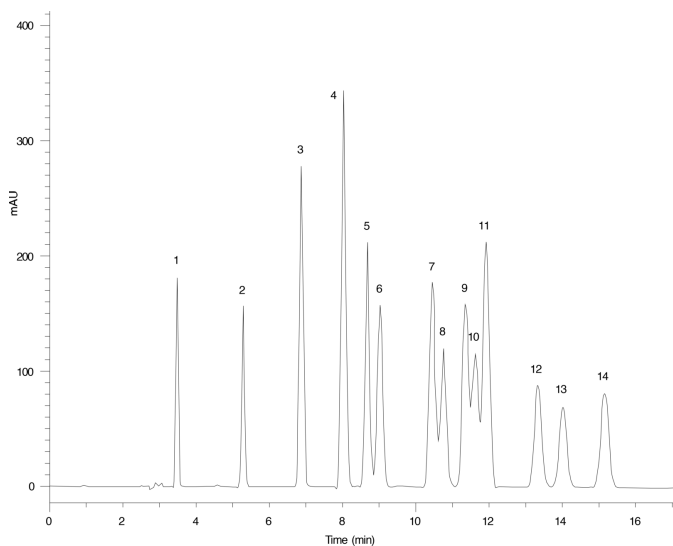
Analyst Note: SecurityGuard™ Guard Cartridge System extends column lifetime.

- SecurityGuard Cartridges, C18 4 x 3.0mm, 10/Pk Part No.: AJ0-4287

- Holder Part No.: KJ0-4282



Products used in this application:



EPA Method 8330 - Explosives on Luna C18(2)

ANALYTES:

- 1** HMX
- 2** RDX
- 3** 1,3,5-Trinitrobenzene
- 4** 1,3-Dinitrobenzene
- 5** Tetryl
- 6** Nitrobenzene
- 7** 2,4,6-Trinitrotoluene
- 8** 4-Amino-2,6-dinitrotoluene
- 9** 2-Amino-4,6-dinitrotoluene
- 10** 2,6-Dinitrotoluene
- 11** 2,4-Dinitrotoluene
- 12** 2-Nitrotoluene
- 13** 4-Nitrotoluene
- 14** 3-Nitrotoluene

