

# HPLC Application

ID No.: 14285

## Simple Sugars (#3) on Luna Amino

**Column:** Luna® 5 µm NH2 100 Å, LC Column 250 x 4.6 mm, Ea

**Dimensions:** 250 x 4.6 mm ID

**Order No:** 00G-4378-E0

**Elution Type:** Isocratic

**Eluent A:** Acetonitrile

**Eluent B:** Water

Gradient Profile:	Step No.	Time (min)	Pct A	Pct B
	1	0	80	20

**Flow Rate:** 3 mL/min

**Col. Temp.:** 40 °C

**Detection:** Refractive Index (RI) @ (ambient)

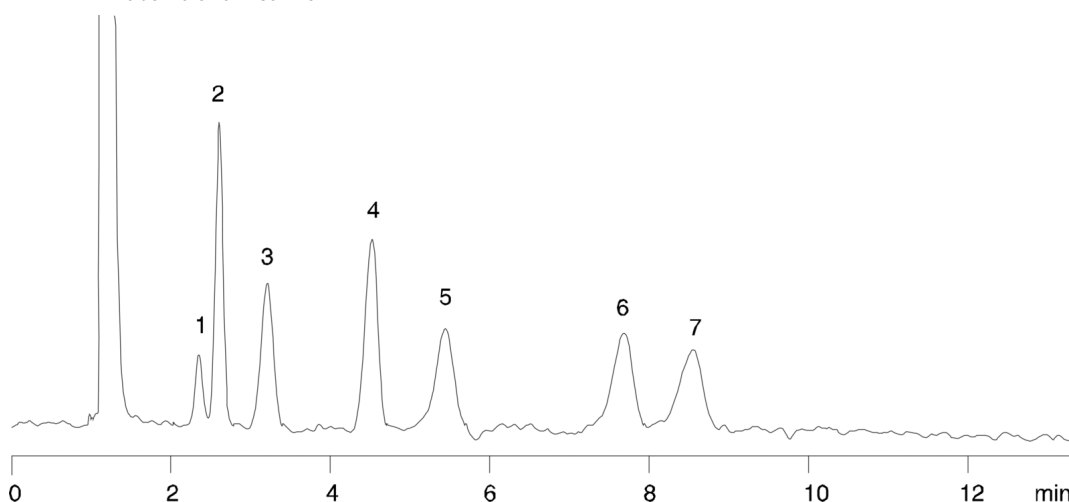
**Analyst Note:** SecurityGuard™ Guard Cartridge System extends column lifetime.

- SecurityGuard Cartridges, NH2 4 x 3.0mm, 10/Pk Part No.: AJ0-4302

- Holder Part No.: KJ0-4282



Products used in this application:



### ANALYTES:

- 1 Xylose
- 2 Fructose
- 3 Glucose
- 4 Sucrose
- 5 Maltose
- 6 Melezitose
- 7 Raffinose

