

HPLC Application

ID No.: 14298

Estrogens on Luna Amino

Column: Luna® 5 µm NH2 100 Å, LC Column 150 x 4.6 mm, Ea

Dimensions: 150 x 4.6 mm ID

Order No: 00F-4378-E0

Elution Type: Isocratic

Eluent A: Hexane

Eluent B: Isopropyl Alcohol

| Gradient Profile: | Step No. | Time (min) | Pct A | Pct B |
|-------------------|----------|------------|-------|-------|
| | 1 | 0 | 70 | 30 |

Flow Rate: 2 mL/min

Col. Temp.: ambient

Detection: UV-Vis Abs.-Variable Wave.(UV) @ 280 nm (ambient)

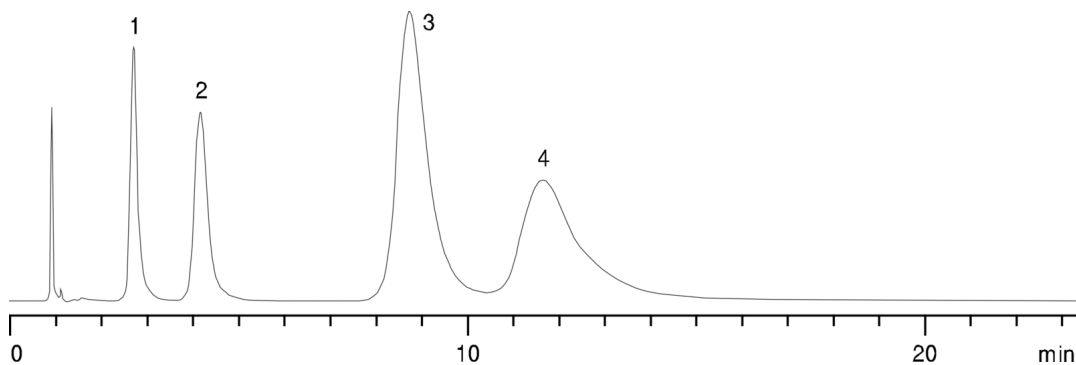
Analyst Note: SecurityGuard™ Guard Cartridge System extends column lifetime.

- SecurityGuard Cartridges, NH2 4 x 3.0mm, 10/Pk Part No.: AJ0-4302

- Holder Part No.: KJ0-4282



Products used in this application:



ANALYTES:

- 1 Estrone
- 2 beta-Estradiol
- 3 Diethylstilbestrol
- 4 Estriol

