

GC Application

ID No.: 14323

EPA Method 624 CLP

Column: Zebtron™ ZB-624, GC Cap. Column 30 m x 0.53 mm x 3.00 μm, Ea

Phase: 6% Cyanopropylphenyl 94% Dimethylpolysiloxane

Dimensions: 30 meters x 0.53 mm x 3 μm

Order No: 7HK-G005-36

Oven Profile: 35°C (6 min), 5°C/min to 140°C (8 min)

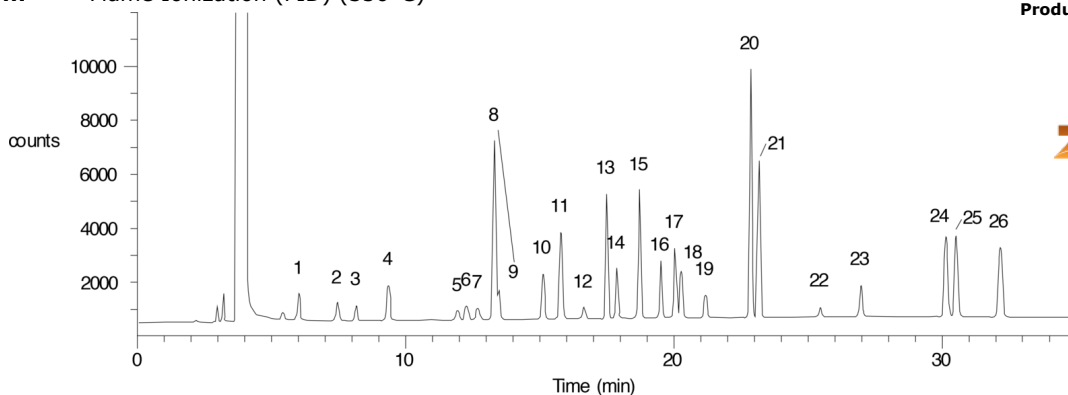
Carrier Gas: Constant Flow Helium, 2.65 mL/min

Injection: Split 10:1 1 μL @ 250°C

Detection: Flame Ionization (FID) (350°C)



Products used in this application:



EPA Method 624 CLP

ANALYTES:

- 1 1,1-Dichloroethene
- 2 Methylene chloride
- 3 trans-1,2-Dichloroethene
- 4 1,1-Dichloroethane
- 5 Chloroform
- 6 1,1,1-Trichloroethane
- 7 Carbon tetrachloride
- 8 Benzene
- 9 1,2-Dichloroethane
- 10 Trichloroethene
- 11 1,2-Dichloropropane
- 12 Bromodichloromethane
- 13 2-Chloroethyl vinyl ether
- 14 cis-1,3-Dichloropropene
- 15 Toluene
- 16 trans-1,3-Dichloropropene
- 17 1,1,2-Trichloroethane
- 18 Tetrachloroethane
- 19 Dibromochloromethane
- 20 Ethylbenzene
- 21 Chlorobenzene
- 22 Bromoform
- 23 1,1,2,2-Tetrachloroethane
- 24 1,3-Dichlorobenzene
- 25 1,4-Dichlorobenzene
- 26 1,2-Dichlorobenzene

