

# HPLC Application

ID No.: 14336

## **a-Chymotrypsin**

**Column:** Jupiter<sup>®</sup> 4  $\mu$ m Proteo 90 Å, LC Column 150 x 0.5 mm, Capillary, Ea

**Dimensions:** 150 x 0.5 mm ID

**Order No:** 00F-4396-AF

**Elution Type:** Gradient

**Eluent A:** 0.01% TFA in water

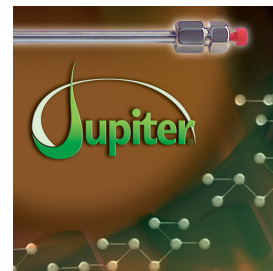
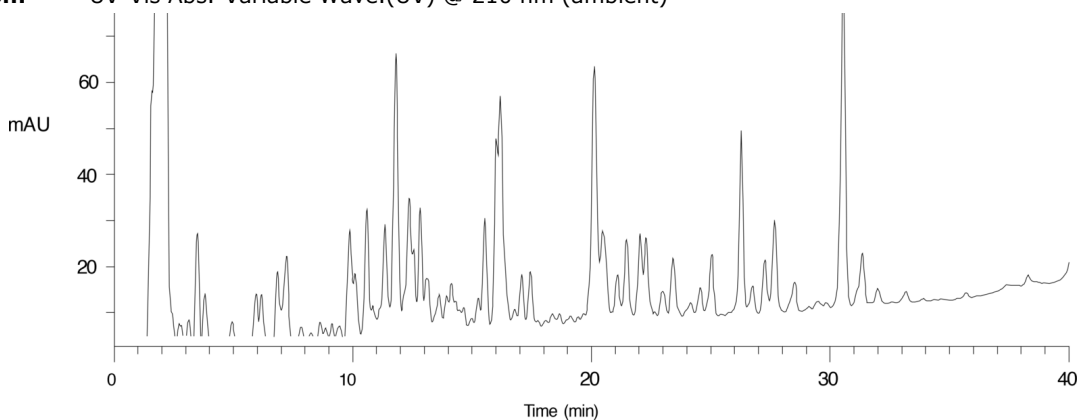
**Eluent B:** 0.008% TFA in CH<sub>3</sub>CN

<b>Gradient Profile:</b>	<b>Step No.</b>	<b>Time (min)</b>	<b>Pct A</b>	<b>Pct B</b>
	<b>1</b>	0	95	5
	<b>2</b>	5	95	5
	<b>3</b>	50	55	45
	<b>4</b>	50.01	95	5
	<b>5</b>	60	95	5

**Flow Rate:** 15  $\mu$ L/min

**Col. Temp.:** 40 °C

**Detection:** UV-Vis Abs.-Variable Wave.(UV) @ 210 nm (ambient)



Products used in this application:



### **ANALYTES:**

- 1 a-Chymotrypsin tryptic digest

