

# HPLC Application

ID No.: 14338

## β-Lactoglobuline (oxidized)

**Column:** Jupiter<sup>®</sup> 5 μm C18 300 Å, LC Column 150 x 0.5 mm, Capillary, Ea

**Dimensions:** 150 x 0.5 mm ID

**Order No:** 00F-4053-AF

**Elution Type:** Gradient

**Eluent A:** 0.01% TFA in water

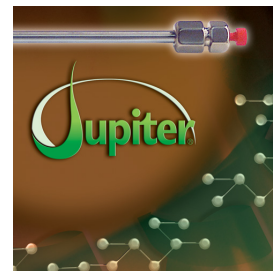
**Eluent B:** 0.008% TFA in CH<sub>3</sub>CN

<b>Gradient Profile:</b>	<b>Step No.</b>	<b>Time (min)</b>	<b>Pct A</b>	<b>Pct B</b>
	<b>1</b>	0	95	5
	<b>2</b>	45	55	45
	<b>3</b>	45.01	95	5
	<b>4</b>	55	95	5

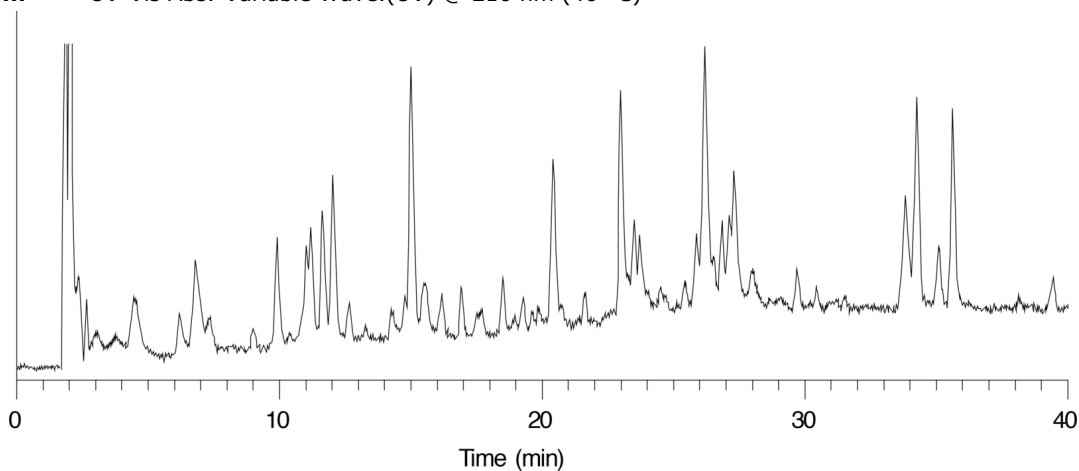
**Flow Rate:** 15 μL/min

**Col. Temp.:** 40 °C

**Detection:** UV-Vis Abs.-Variable Wave.(UV) @ 210 nm (40 °C)



Products used in this application:



### ANALYTES:

- 1 β-Lactoglobuline (oxidized)-tryptic digest

