

# HPLC Application

ID No.: 14362

## Urea-Glycerol on Luna Amino

**Column:** Luna<sup>®</sup> 5  $\mu$ m NH<sub>2</sub> 100 Å, LC Column 250 x 4.6 mm, Ea

**Dimensions:** 250 x 4.6 mm ID

**Order No:** 00G-4378-E0

**Elution Type:** Isocratic

**Eluent A:** Acetonitrile

**Eluent B:** Water

Gradient Profile:	Step No.	Time (min)	Pct A	Pct B
	1	0	90	10

**Flow Rate:** 2 mL/min

**Col. Temp.:** ambient

**Detection:** Refractive Index (RI) @ (40 °C)

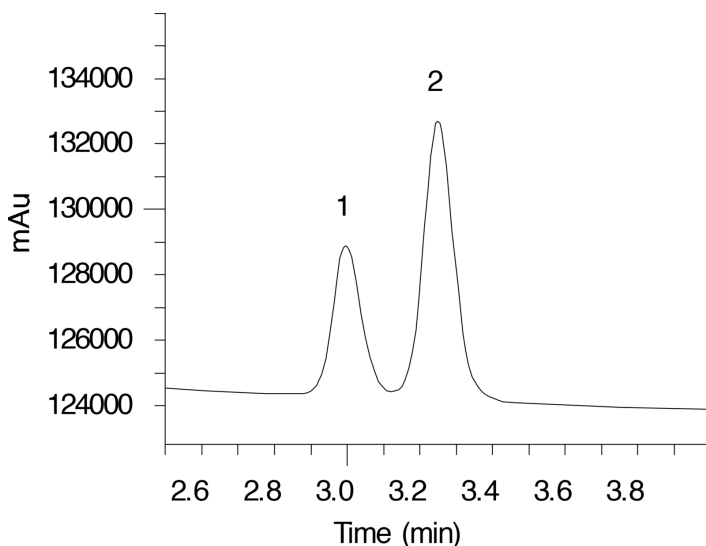
**Analyst Note:** SecurityGuard<sup>™</sup> Guard Cartridge System extends column lifetime.

- SecurityGuard Cartridges, NH<sub>2</sub> 4 x 3.0mm, 10/Pk Part No.: AJ0-4302

- Holder Part No.: KJ0-4282



Products used in this application:



### ANALYTES:

- 1 Urea
- 2 Glycerol

