

# HPLC Application

ID No.: 14363

## Sorbitol - Mannitol on Luna Amino

**Column:** Luna® 5 µm NH2 100 Å, LC Column 250 x 4.6 mm, Ea

**Dimensions:** 250 x 4.6 mm ID

**Order No:** 00G-4378-E0

**Elution Type:** Isocratic

**Eluent A:** 80:10:5 Acetonitrile:Water:Methanol

Gradient	Step No.	Time (min)	Pct A
<b>Profile:</b>	<b>1</b>	0	100

**Flow Rate:** 2 mL/min

**Col. Temp.:** 40 °C

**Detection:** Refractive Index (RI) @ nm (40 °C)

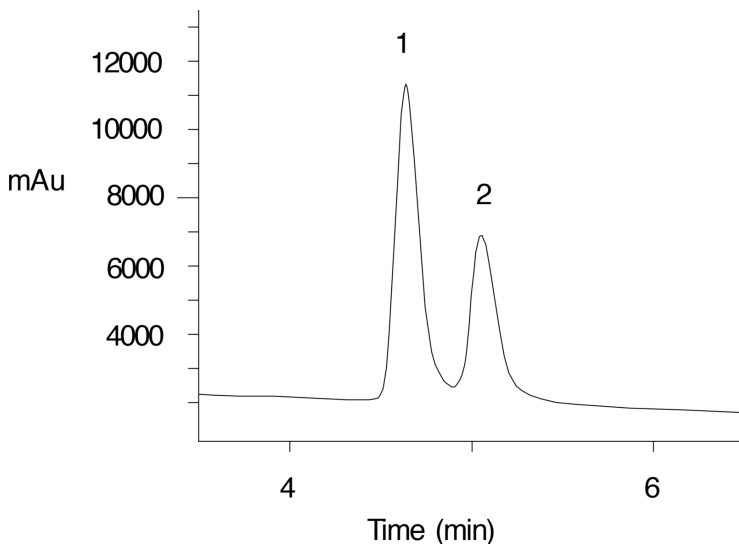
**Analyst Note:** SecurityGuard™ Guard Cartridge System extends column lifetime.

- SecurityGuard Cartridges, NH2 4 x 3.0mm, 10/Pk Part No.: AJ0-4302

- Holder Part No.: KJ0-4282



Products used in this application:



### ANALYTES:

1 Sorbitol

2 Mannitol

