

# HPLC Application

ID No.: 14370

## Tryptic map of Dog Cytochrome C - Jupiter Proteo

**Column:** Jupiter<sup>®</sup> 4  $\mu$ m Proteo 90  $\text{\AA}$ , LC Column 250 x 4.6 mm, Ea

**Dimensions:** 250 x 4.6 mm ID

**Order No:** 00G-4396-E0

**Elution Type:** Gradient

**Eluent A:** Water with 1.25mM TFA

**Eluent B:** Acetonitrile with 1mM TFA

Gradient Profile:	Step No.	Time (min)	Pct A	Pct B
	1	0	95	5
	2	5	95	5
	3	60	60	40

**Flow Rate:** 1 mL/min

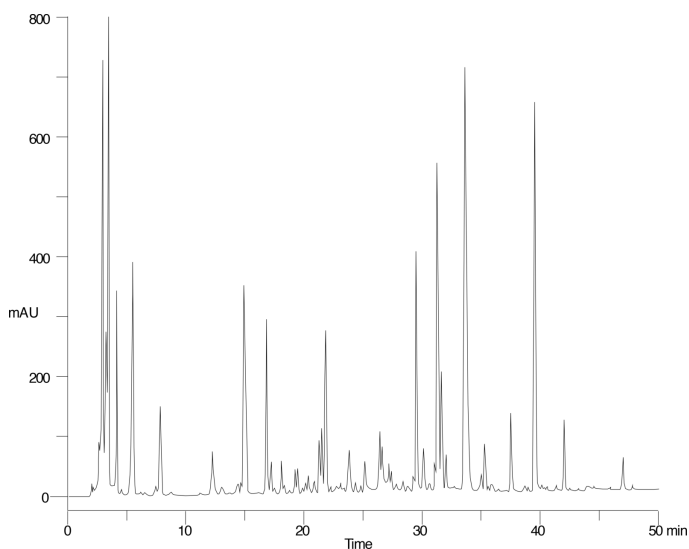
**Col. Temp.:** ambient

**Detection:** UV-Vis Abs.-Variable Wave.(UV) @ 210 nm (ambient)

**Analyst Note:** SecurityGuard<sup>™</sup> Guard Cartridge System extends column lifetime.

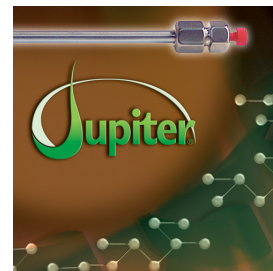
- SecurityGuard Cartridges, C12 4 x 3.0mm, 10/Pk Part No.: AJ0-6074

- Holder Part No.: KJ0-4282



### ANALYTES:

- 1 Dog Cytochrome c



Products used in this application:

