

HPLC Application

ID No.: 14372

Tryptic Map of Bovine Cytochrome C - Jupiter Proteo

Column: Jupiter[®] 4 μ m Proteo 90 Å, LC Column 250 x 4.6 mm, Ea

Dimensions: 250 x 4.6 mm ID

Order No: 00G-4396-E0

Elution Type: Gradient

Eluent A: Water with 1.25mM TFA

Eluent B: Acetonitrile with 1mM TFA

Gradient Profile:	Step No.	Time (min)	Pct A	Pct B
	1	0	95	5
	2	5	95	5
	3	60	60	40

Flow Rate: 1 mL/min

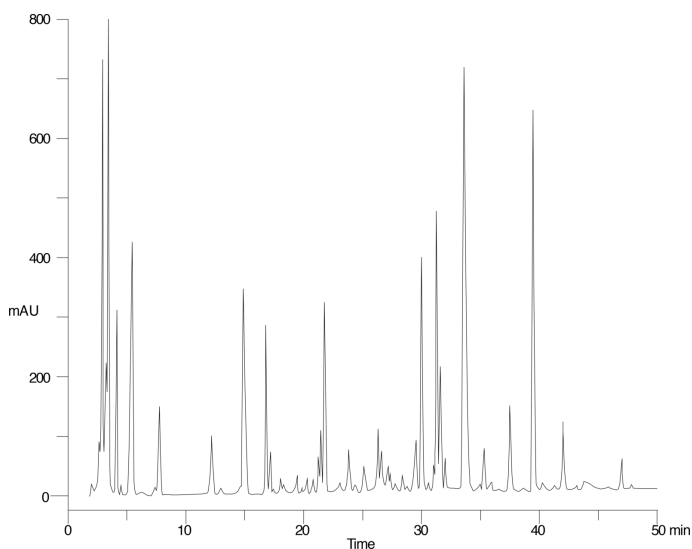
Col. Temp.: ambient

Detection: UV-Vis Abs.-Variable Wave.(UV) @ 210 nm (ambient)

Analyst Note: SecurityGuard[™] Guard Cartridge System extends column lifetime.

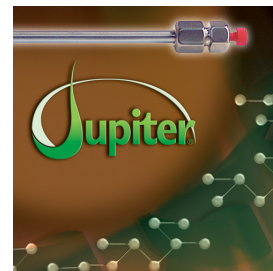
- SecurityGuard Cartridges, C12 4 x 3.0mm, 10/Pk Part No.: AJ0-6074

- Holder Part No.: KJ0-4282



ANALYTES:

- 1 Bovine Cytochrome c



Products used in this application:

