

# HPLC Application

ID No.: 14396

## Peptides on Jupiter Proteo

**Column:** Jupiter® 4 µm Proteo 90 Å, LC Column 250 x 4.6 mm, Ea

**Dimensions:** 250 x 4.6 mm ID

**Order No:** 00G-4396-E0

**Elution Type:** Gradient

**Eluent A:** 0.1% TFA in Water

**Eluent B:** 0.08% TFA in Acetonitrile

Gradient Profile:	Step No.	Time (min)	Pct A	Pct B
	1	0	95	5
	2	20	60	40

**Flow Rate:** 1 mL/min

**Col. Temp.:** ambient

**Detection:** UV-Vis Abs.-Variable Wave.(UV) @ 210 nm (ambient)

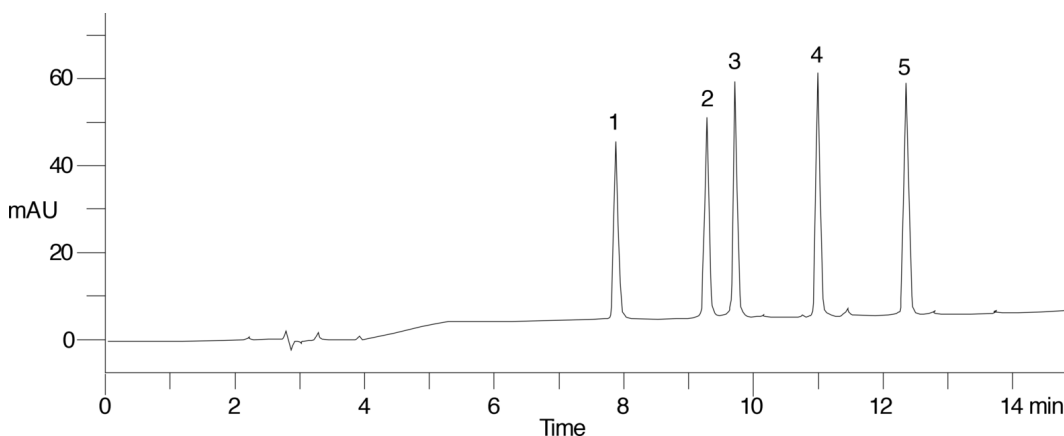
**Analyst Note:** SecurityGuard™ Guard Cartridge System extends column lifetime.

- SecurityGuard Cartridges, C12 4 x 3.0mm, 10/Pk Part No.: AJ0-6074

- Holder Part No.: KJ0-4282



Products used in this application:



### ANALYTES:

- 1 Arg-Gly-Ala-Gly-Gly-Leu-Gly-Leu-Gly-Lys-amide
- 2 Ac-Arg-Gly-Gly-Gly-Gly-Leu-Gly-Leu-Gly-Lys-amide
- 3 Ac-Arg-Gly-Ala-Gly-Gly-Leu-Gly-Leu-Gly-Lys-amide
- 4 Ac-Arg-Gly-Val-Gly-Gly-Leu-Gly-Leu-Gly-Lys-amide
- 5 Ac-Arg-Gly-Val-Val-Gly-Leu-Gly-Leu-Gly-Lys-amide

