

HPLC Application

ID No.: 14398

a-Lactoglobulin tryptic map on Jupiter C18

Column: Jupiter[®] 5 μ m C18 300 Å, LC Column 250 x 4.6 mm, Ea

Dimensions: 250 x 4.6 mm ID

Order No: 00G-4053-E0

Elution Type: Gradient

Eluent A: Water with 1.25mM TFA

Eluent B: ACetonitrile with 1mM TFA

| Gradient Profile: | Step No. | Time (min) | Pct A | Pct B |
|--------------------------|-----------------|-------------------|--------------|--------------|
| | 1 | 0 | 95 | 5 |
| | 2 | 5 | 95 | 5 |
| | 3 | 60 | 60 | 40 |

Flow Rate: 1 mL/min

Col. Temp.: ambient

Detection: UV-Vis Abs.-Variable Wave.(UV) @ 210 nm (ambient)

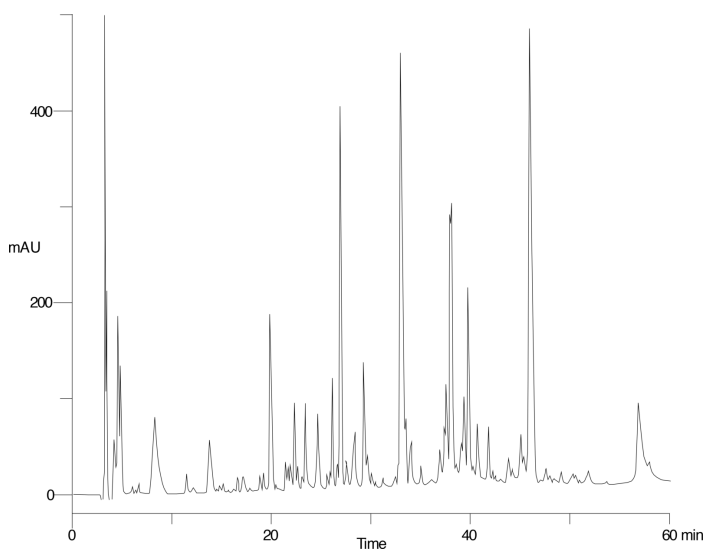
Analyst Note: SecurityGuard[™] Guard Cartridge System extends column lifetime.

- SecurityGuard Cartridges, Widedpore C18 4 x 3.0mm, 10/Pk Part No.: AJ0-4321

- Holder Part No.: KJ0-4282



Products used in this application:



ANALYTES:

- 1 alpha-Lactoglobulin

