

# HPLC Application

ID No.: 14414

## Sorbitol - Mannitol - Maltitol on Luna Amino

**Column:** Luna<sup>®</sup> 5  $\mu$ m NH<sub>2</sub> 100 Å, LC Column 150 x 4.6 mm, Ea

**Dimensions:** 150 x 4.6 mm ID

**Order No:** 00F-4378-E0

**Elution Type:** Isocratic

**Eluent A:** Acetonitrile

**Eluent B:** Water

Gradient Profile:	Step No.	Time (min)	Pct A	Pct B
	1	0	90	10

**Flow Rate:** 3 mL/min

**Col. Temp.:** 40 °C

**Detection:** Refractive Index (RI) @ (ambient)

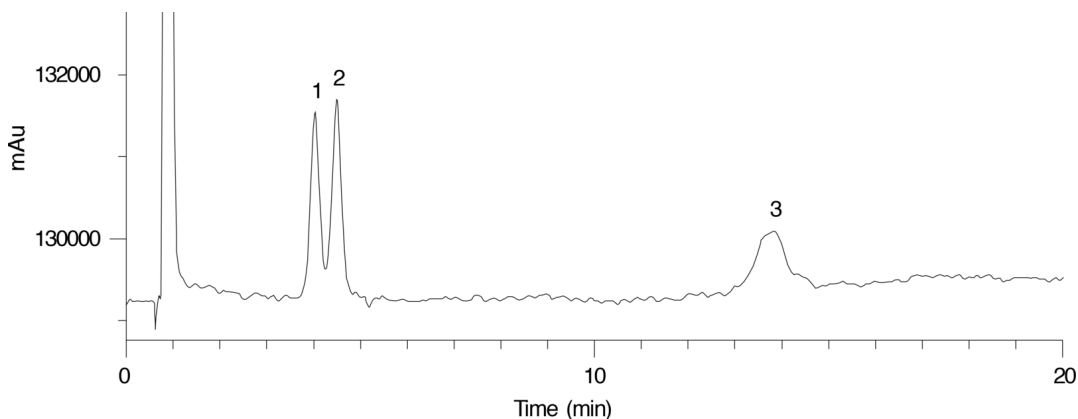
**Analyst Note:** SecurityGuard<sup>™</sup> Guard Cartridge System extends column lifetime.

- SecurityGuard Cartridges, NH<sub>2</sub> 4 x 3.0mm, 10/Pk Part No.: AJ0-4302

- Holder Part No.: KJ0-4282



Products used in this application:



### ANALYTES:

- 1 Sorbitol
- 2 Mannitol
- 3 Maltitol

