

# HPLC Application

ID No.: 14421

## Jupiter Proteo Batch Reproducibility (Batch 6)

**Column:** Jupiter<sup>®</sup> 4  $\mu$ m Proteo 90 Å, LC Column 150 x 4.6 mm, Ea

**Dimensions:** 150 x 4.6 mm ID

**Order No:** 00F-4396-E0

**Elution Type:** Gradient

**Eluent A:** 0.1 % TFA in Water

**Eluent B:** 0.08% TFA in Acetonitrile

Gradient Profile:	Step No.	Time (min)	Pct A	Pct B
	1	0	95	5
	2	20	50	50

**Flow Rate:** 1 mL/min

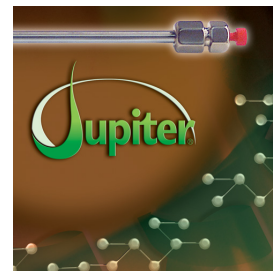
**Col. Temp.:** ambient

**Detection:** UV-Vis Abs.-Variable Wave.(UV) @ 210 nm (ambient)

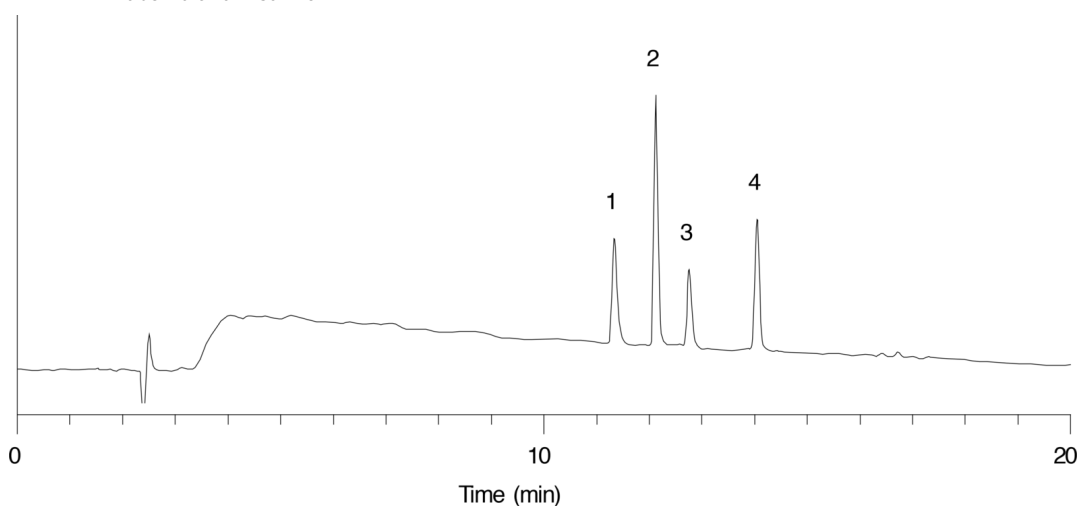
**Analyst Note:** SecurityGuard<sup>™</sup> Guard Cartridge System extends column lifetime.

- SecurityGuard Cartridges, C12 4 x 3.0mm, 10/Pk Part No.: AJ0-6074

- Holder Part No.: KJ0-4282



Products used in this application:



### ANALYTES:

- 1 Bradykinin
- 2 Angiotensin III
- 3 Neurotensin
- 4 Eledoisin

