

HPLC Application

ID No.: 14422

Cough and Colds on Luna C18(2)

Column: Luna® 5 µm C18(2) 100 Å, LC Column 150 x 4.6 mm, Ea

Dimensions: 150 x 4.6 mm ID

Order No: 00F-4252-E0

Elution Type: Isocratic

Eluent A: 20mM Potassium Phosphate Buffer pH 2.5

Eluent B: Acetonitrile

Gradient Profile:	Step No.	Time (min)	Pct A	Pct B
	1	0	75	25

Flow Rate: 1.5 mL/min

Col. Temp.: ambient

Detection: UV-Vis Abs.-Variable Wave.(UV) @ 210 nm (ambient)

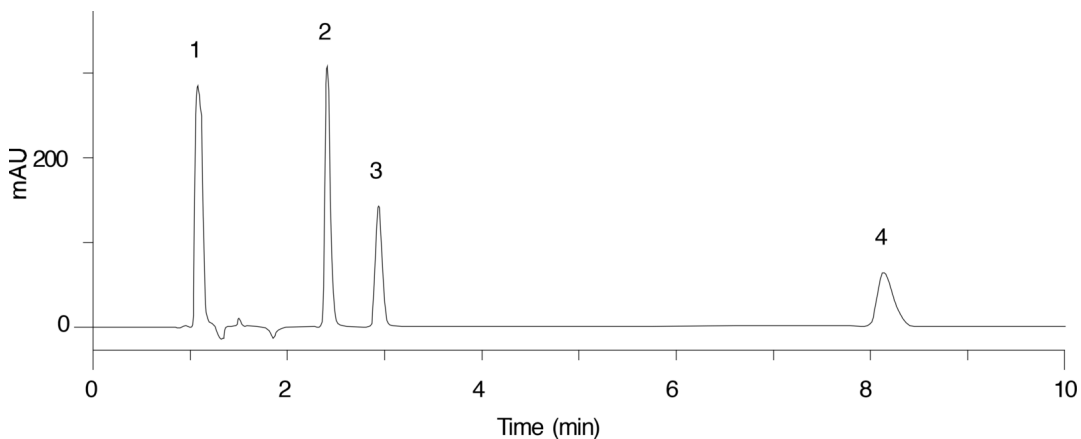
Analyst Note: SecurityGuard™ Guard Cartridge System extends column lifetime.

- SecurityGuard Cartridges, C18 4 x 3.0mm, 10/Pk Part No.: AJ0-4287

- Holder Part No.: KJ0-4282



Products used in this application:



ANALYTES:

- 1 Maleic acid
- 2 Triprolidine
- 3 Chlorpheniramine
- 4 Diphenhydramine

