

## Methylene Selectivity on Jupiter C18 using Peptide Standards

**Column:** Jupiter® 5 µm C18 300 Å, LC Column 250 x 4.6 mm, Ea

**Dimensions:** 250 x 4.6 mm ID

**Order No:** 00G-4053-E0

**Elution Type:** Gradient

**Eluent A:** 0.1% TFA

**Eluent B:** 0.085% TFA in Acetonitrile

| Gradient Profile: | Step No. | Time (min) | Pct A | Pct B |
|-------------------|----------|------------|-------|-------|
|                   | 1        | 0          | 95    | 5     |
|                   | 2        | 20         | 55    | 45    |

**Flow Rate:** 20 mL/min

**Col. Temp.:** ambient

**Detection:** UV-Vis Abs.-Variable Wave.(UV) @ 214 nm (ambient)

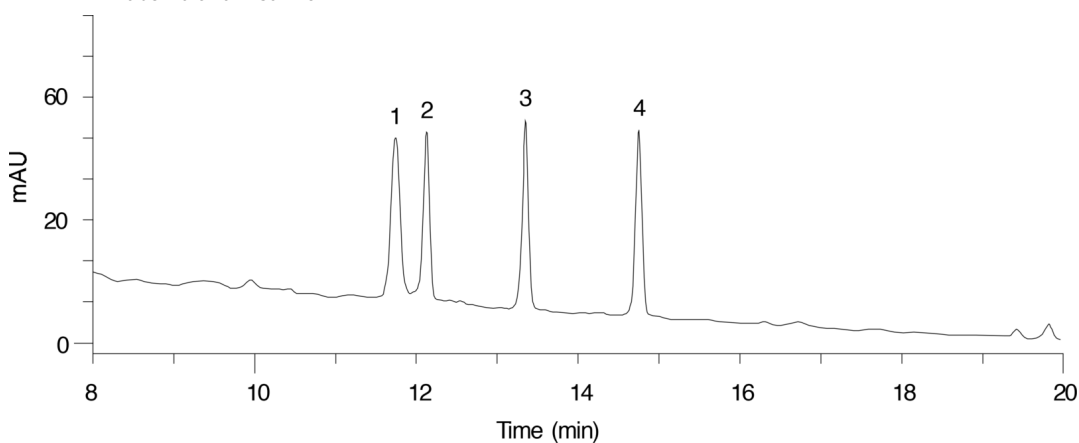
**Analyst Note:** SecurityGuard™ Guard Cartridge System extends column lifetime.

- SecurityGuard Cartridges, Widedpore C18 4 x 3.0mm, 10/Pk Part No.: AJ0-4321

- Holder Part No.: KJ0-4282



Products used in this application:



### ANALYTES:

- 1 peptide 1
- 2 peptide 2
- 3 peptide 3
- 4 peptide 4
- 5 peptide 5

