

# HPLC Application

ID No.: 14449

## Extraction of Bronchodilators on Strata<sup>™</sup> X

**Column:** Luna<sup>®</sup> 5  $\mu$ m C8(2) 100 Å, LC Column 150 x 4.6 mm, Ea

**Dimensions:** 150 x 4.6 mm ID

**Order No:** 00F-4249-E0

**Elution Type:** Isocratic

**Eluent A:** 20 mM KH<sub>2</sub>PO<sub>4</sub>, pH 2.5

**Eluent B:** ACN

| Gradient Profile: | Step No. | Time (min) | Pct A | Pct B |
|-------------------|----------|------------|-------|-------|
|                   | 1        | 0          | 95    | 5     |

**Flow Rate:** 1.5 mL/min

**Col. Temp.:** 25 °C

**Detection:** UV-Vis Abs.-Fixed Wave. (UV) @ 273 nm (ambient)

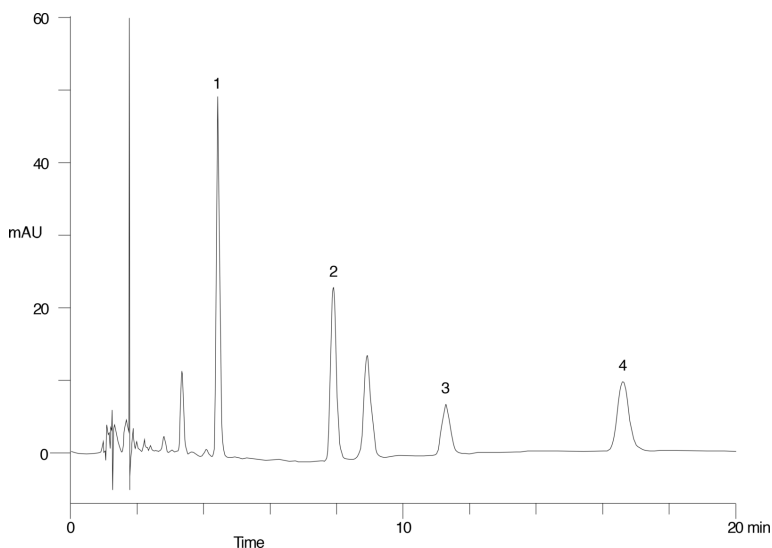
**Analyst Note:** SecurityGuard<sup>™</sup> Guard Cartridge System extends column lifetime.

- SecurityGuard Cartridges, C8 4 x 3.0mm, 10/Pk Part No.: AJ0-4290

- Holder Part No.: KJ0-4282



Products used in this application:



### ANALYTES:

- 1 Theobromine
- 2 Theophylline
- 3 Beta hydroxy theophylline
- 4 Caffeine

