

HPLC Application

ID No.: 14453

Extraction of Cimetidine on Strata[™] X

Column: Luna[®] 5 μ m C8(2) 100 Å, LC Column 150 x 4.6 mm, Ea

Dimensions: 150 x 4.6 mm ID

Order No: 00F-4249-E0

Elution Type: Isocratic

Eluent A: 20mM KH₂PO₄ (pH 7.0)

Eluent B: Methanol

Gradient Profile:	Step No.	Time (min)	Pct A	Pct B
	1	0	90	10

Flow Rate: 1 mL/min

Col. Temp.: ambient

Detection: UV-Vis Abs.-Fixed Wave. (UV) @ 220 nm (ambient)

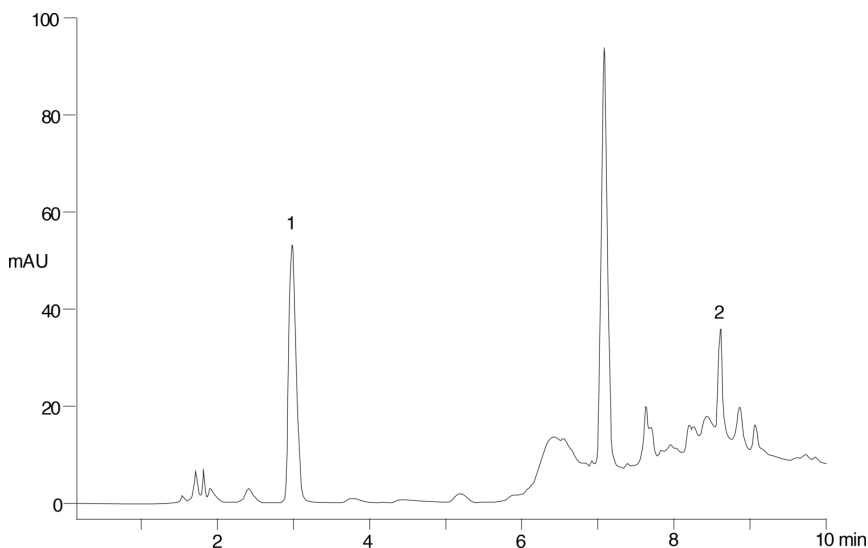
Analyst Note: SecurityGuard[™] Guard Cartridge System extends column lifetime.

- SecurityGuard Cartridges, C8 4 x 3.0mm, 10/Pk Part No.: AJ0-4290

- Holder Part No.: KJ0-4282



Products used in this application:



ANALYTES:

- 1 Sulfanilimide
- 2 Cimetidine

