

HPLC Application

ID No.: 14472

EPA Method 550, PAH's in drinking water

Column: Synergi[™] 4 μ m Max-RP 80 Å, LC Column 250 x 4.6 mm, Ea

Dimensions: 250 x 4.6 mm ID

Order No: 00G-4337-E0

Elution Type: Gradient

Eluent A: Water

Eluent B: Acetonitrile

Gradient Profile:	Step No.	Time (min)	Pct A	Pct B
	1	0	65	35
	2	2	65	35
	3	24	0	100
	4	34	0	100

Flow Rate: 1.5 mL/min

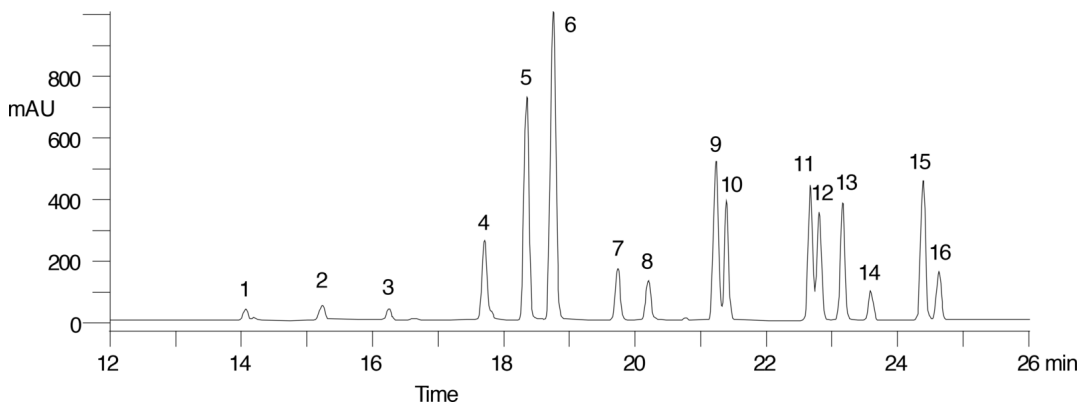
Col. Temp.: ambient

Detection: UV-Vis Abs.-Variable Wave.(UV) @ 254 nm (ambient)

Analyst Note: SecurityGuard[™] Guard Cartridge System extends column lifetime.

- SecurityGuard Cartridges, C12 4 x 3.0mm, 10/Pk Part No.: AJ0-6074

- Holder Part No.: KJ0-4282



EPA Method 550, PAH's in drinking water

ANALYTES:

- 1** Naphthalene
- 2** Acenaphthylene
- 3** Acenaphthene
- 4** Fluorene
- 5** Phenanthrene
- 6** Anthracene
- 7** Fluoranthene
- 8** Pyrene
- 9** benzo(a)anthracene
- 10** Chrysene
- 11** benzo(b)fluoranthene
- 12** benzo(k)fluoranthene
- 13** benzo(a)pyrene
- 14** Dibenz[a,h]anthracene
- 15** benzo(g,h,i)perylene
- 16** Indeno[1,2,3-cd]pyrene

