

# HPLC Application

ID No.: 14482

## EPA Method 610-QC-FL, PAH's - Florida

**Column:** Luna® 5 µm C18(2) 100 Å, LC Column 250 x 4.6 mm, Ea

**Dimensions:** 250 x 4.6 mm ID

**Order No:** 00G-4252-E0

**Elution Type:** Gradient

**Eluent A:** Water

**Eluent B:** Acetonitrile

Gradient Profile:	Step No.	Time (min)	Pct A	Pct B
	1	0	60	40
	2	5	60	40
	3	30	0	100

**Flow Rate:** 1.55 mL/min

**Col. Temp.:** ambient

**Detection:** UV-Vis Abs.-Variable Wave.(UV) @ 210 nm (ambient)

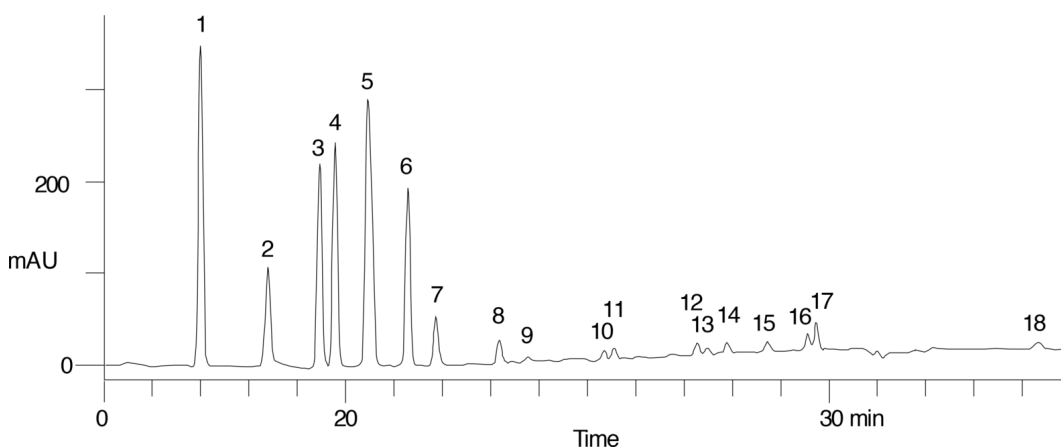
**Analyst Note:** SecurityGuard™ Guard Cartridge System extends column lifetime.

- SecurityGuard Cartridges, C18 4 x 3.0mm, 10/Pk Part No.: AJ0-4287

- Holder Part No.: KJ0-4282



Products used in this application:



## EPA Method 610-QC-FL, PAH's - Florida

### ANALYTES:

- 1 Naphthalene
- 2 Acenaphthylene
- 3 1-Methylnaphthalene
- 4 2-Methylnaphthalene
- 5 Acenaphthene
- 6 Fluorene
- 7 Phenanthrene
- 8 Anthracene
- 9 Fluoranthene
- 10 Pyrene
- 11 Benz[a]anthracene
- 12 Chrysene
- 13 Benzo[b]fluoranthene
- 14 Benzo[k]fluoranthene
- 15 Benzo[a]pyrene
- 16 Dibenzo[a,h]anthracene
- 17 Benzo[g,h,i]perylene
- 18 Indeno[1,2,3-cd]pyrene

