

# HPLC Application

ID No.: 14555

## Children's Tylenol Cold on Luna SCX

**Column:** Luna® 5 µm SCX 100 Å, LC Column 150 x 4.6 mm, Ea

**Dimensions:** 150 x 4.6 mm ID

**Order No:** 00F-4398-E0

**Elution Type:** Isocratic

**Eluent A:** 50mM KH<sub>2</sub>PO<sub>4</sub>, pH 2.5

**Eluent B:** Acetonitrile

Gradient Profile:	Step No.	Time (min)	Pct A	Pct B
	1	0	35	65

**Flow Rate:** 1.5 mL/min

**Col. Temp.:** ambient

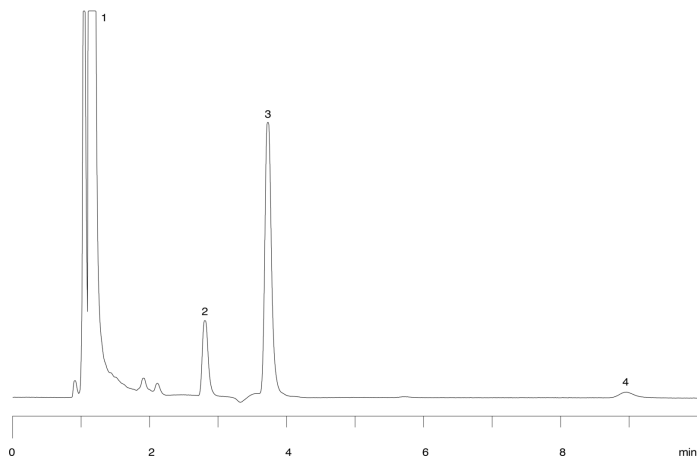
**Detection:** UV-Vis Abs.-Variable Wave.(UV) @ 210 nm (ambient)

**Analyst Note:** SecurityGuard™ Guard Cartridge System extends column lifetime.

- SecurityGuard Cartridges, SCX 4 x 3.0mm, 10/Pk Part No.: AJ0-4308

- Holder Part No.: KJ0-4282

14555



### ANALYTES:

- 1 Acetaminophen
- 2 Pseudoephedrine
- 3 Dextromethorphan
- 4 Chlorpheniramine



Products used in this application:

