

HPLC Application

ID No.: 14563

Luna SCX Batch Reproducibility - Amphetamines (Batch 3)

Column: Luna® 5 µm SCX 100 Å, LC Column 150 x 4.6 mm, Ea

Dimensions: 150 x 4.6 mm ID

Order No: 00F-4398-E0

Elution Type: Isocratic

Eluent A: 100mM Sodium Phosphate, pH 3.5

Eluent B: Acetonitrile

Gradient Profile:	Step No.	Time (min)	Pct A	Pct B
	1	0	75	25

Flow Rate: 1.5 mL/min

Col. Temp.: ambient

Detection: UV-Vis Abs.-Variable Wave.(UV) @ 210 nm (ambient)

Analyst Note: SecurityGuard™ Guard Cartridge System extends column lifetime.

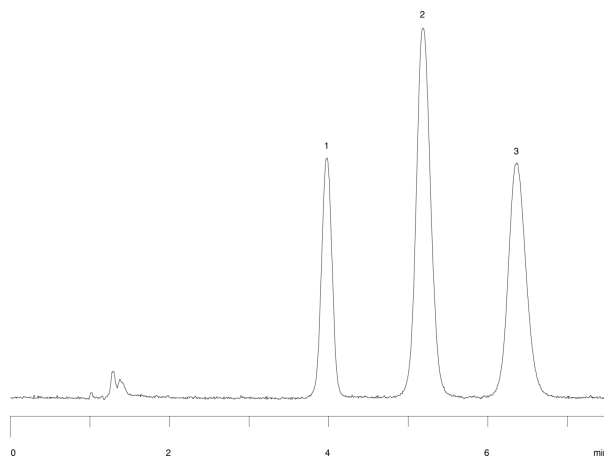
- SecurityGuard Cartridges, SCX 4 x 3.0mm, 10/Pk Part No.: AJ0-4308

- Holder Part No.: KJ0-4282

14563



Products used in this application:



ANALYTES:

- 1 Phenylpropanolamine
- 2 Amphetamine
- 3 Methamphetamine

