

# GC Application

ID No.: 14568

## Aroclor 1016 on ZB5 15m x .32mm x .25um

**Column:** Zebtron<sup>™</sup> ZB-5, GC Cap. Column 15 m x 0.32 mm x 0.25 µm, Ea

**Phase:** 5% Phenyl 95% Dimethylpolysiloxane

**Dimensions:** 15 meters x 0.32 mm x 0.25 µm

**Order No:** 7EM-G002-11

**Oven Profile:** 150°C to 300°C at 12°C/min

**Carrier Gas:** Constant Flow Helium, 1.7 mL/min

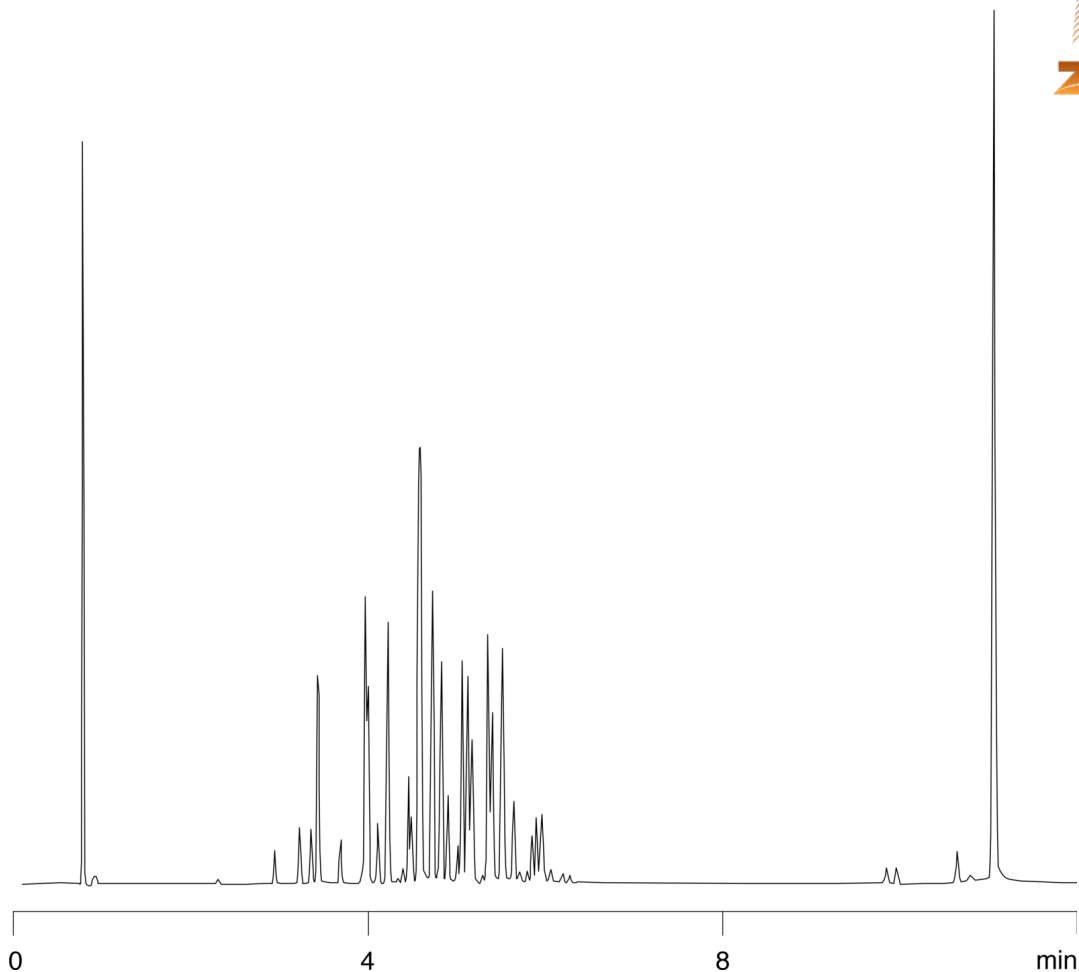
**Injection:** split 15:1:1 1 µL @ 250°C

**Detection:** Electron Capture (ECD) (375°C)

14568



Products used in this application:



### ANALYTES:

- 1 Aroclor 1016

