

# GC Application

ID No.: 14600

## Aroclor 1268 on ZB35 30m x .32mm x .25um

**Column:** Zebtron<sup>™</sup> ZB-35, GC Cap. Column 30 m x 0.32 mm x 0.25  $\mu$ m, Ea

**Phase:** 35% Phenyl 65% Dimethylpolysiloxane

**Dimensions:** 30 meters x 0.32 mm x 0.25  $\mu$ m

**Order No:** 7HM-G003-11

**Oven Profile:** 120°C (1 min) to 300°C at 9°C/min (hold 5 min)

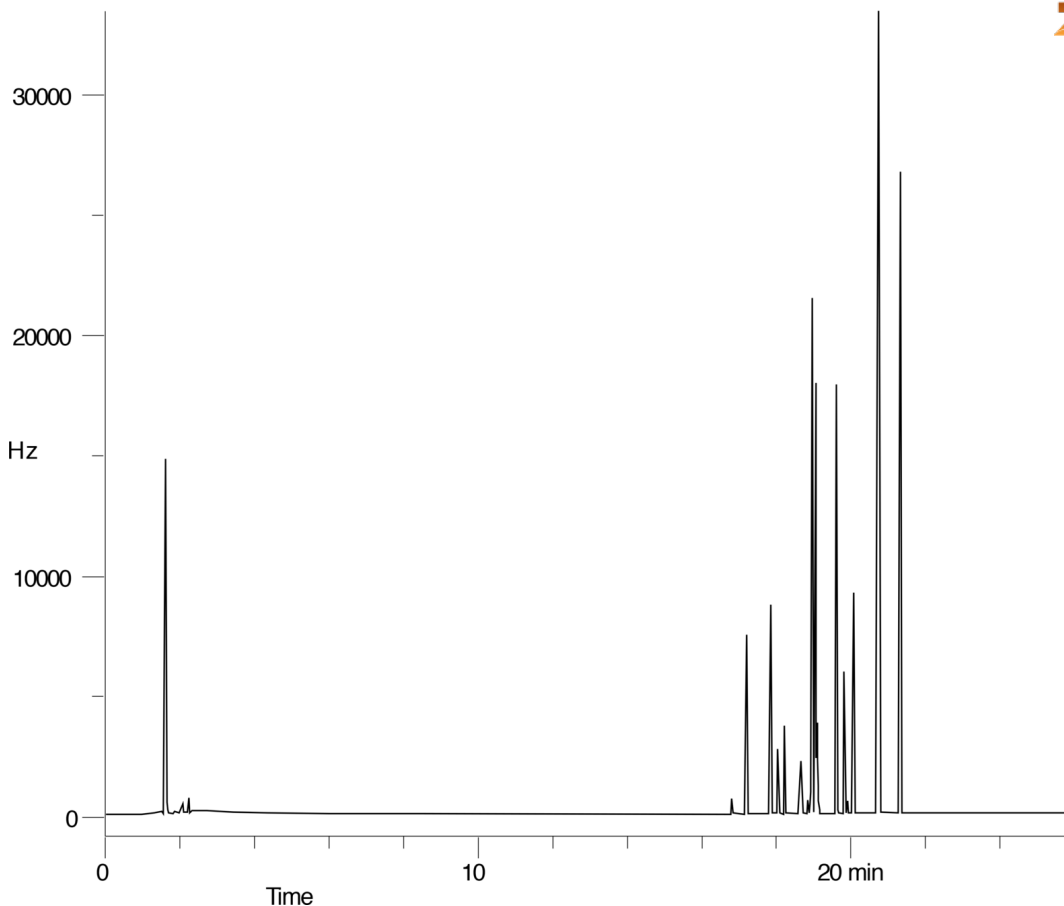
**Carrier Gas:** Constant Flow Helium, 1.7 mL/min

**Injection:** Split 15:1:1 1  $\mu$ L @ 250°C

**Detection:** Electron Capture (ECD) (375°C)  
14600



Products used in this application:



### ANALYTES:

- 1 Aroclor 1268

