

HPLC Application

ID No.: 14628

Anion Exchange 12-18mer Oligo on Luna Amino

Column: Luna® 5 µm NH2 100 Å, LC Column 150 x 4.6 mm, Ea

Dimensions: 150 x 4.6 mm ID

Order No: 00F-4378-E0

Elution Type: Gradient

Eluent A: 20mM Sodium Phosphate in 90/10 Water/Acetonitrile

Eluent B: 20mM Sodium Phosphate in 90/10 Water/Acetonitrile + 1000mM NaCl

| Gradient Profile: | Step No. | Time (min) | Pct A | Pct B |
|--------------------------|-----------------|-------------------|--------------|--------------|
| | 1 | 2 | 75 | 25 |
| | 2 | 40 | 5 | 95 |

Flow Rate: 1 mL/min

Col. Temp.: 40 °C

Detection: UV-Vis Abs.-Diode Array (PDA) @ nm (ambient)

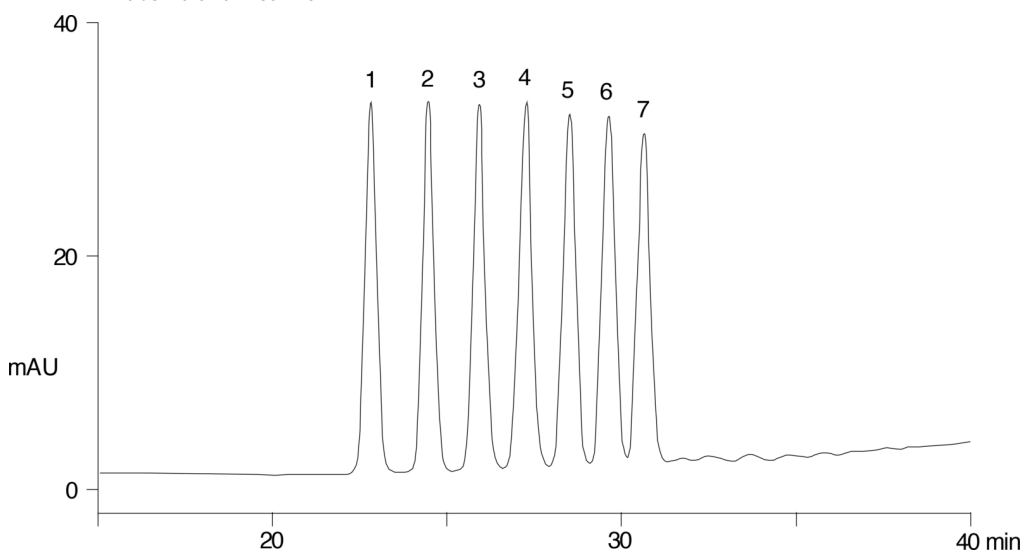
Analyst Note: SecurityGuard™ Guard Cartridge System extends column lifetime.

- SecurityGuard Cartridges, NH2 4 x 3.0mm, 10/Pk Part No.: AJ0-4302

- Holder Part No.: KJ0-4282



Products used in this application:



ANALYTES:

- 1 12mer Oligonucleotide
- 2 13mer Oligonucleotide
- 3 14mer Oligonucleotide
- 4 15mer Oligonucleotide
- 5 16mer Oligonucleotide
- 6 17mer Oligonucleotide
- 7 18mer Oligonucleotide

