

HPLC Application

ID No.: 14629

Anion Exchange 20mer Oligo on Luna Amino

Column: Luna® 5 µm NH₂ 100 Å, LC Column 150 x 4.6 mm, Ea

Dimensions: 150 x 4.6 mm ID

Order No: 00F-4378-E0

Elution Type: Gradient

Eluent A: 20mM Sodium Phosphate in 90/10 Water/Acetonitrile

Eluent B: 20mM Sodium Phosphate in 90/10 Water/Acetonitrile + 1000mM NaCl

Gradient Profile:	Step No.	Time (min)	Pct A	Pct B
	1	2	75	25
	2	45	5	95

Flow Rate: 1 mL/min

Col. Temp.: 40 °C

Detection: UV-Vis Abs.-Diode Array (PDA) @ nm (ambient)

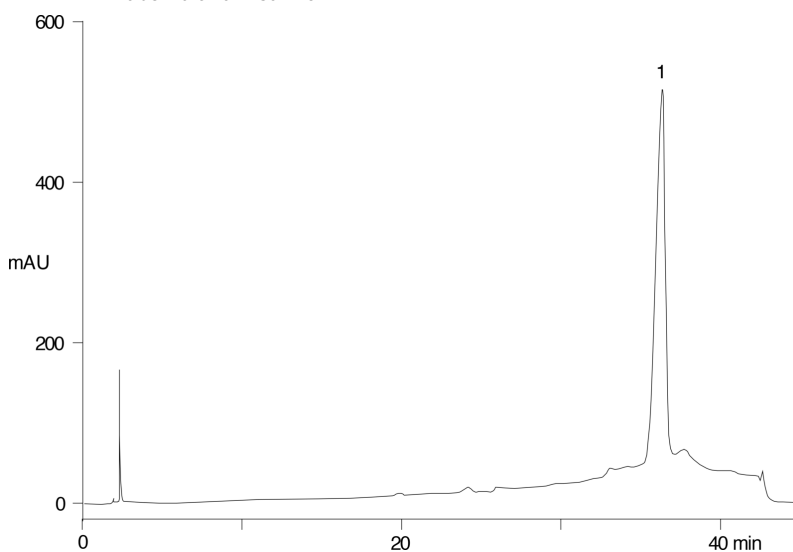
Analyst Note: SecurityGuard™ Guard Cartridge System extends column lifetime.

- SecurityGuard Cartridges, NH₂ 4 x 3.0mm, 10/Pk Part No.: AJ0-4302

- Holder Part No.: KJ0-4282



Products used in this application:



ANALYTES:

1 20mer Oligonucleotide

