

HPLC Application

ID No.: 14667

Polarity on Hyperclone 5u C18

Column: HyperClone™ 5 µm ODS (C18) 120 Å, LC Column 150 x 4.6 mm, Ea

Dimensions: 150 x 4.6 mm ID

Order No: 00F-4361-E0

Elution Type: Isocratic

Eluent A: MeOH

Eluent B: Water

Gradient Profile:	Step No.	Time (min)	Pct A	Pct B
	1	0	55	45

Flow Rate: 1 mL/min

Col. Temp.: ambient

Detection: UV-Vis Abs.-Variable Wave.(UV) @ 254 nm (ambient)

Analyst Note: SecurityGuard™ Guard Cartridge System extends column lifetime.

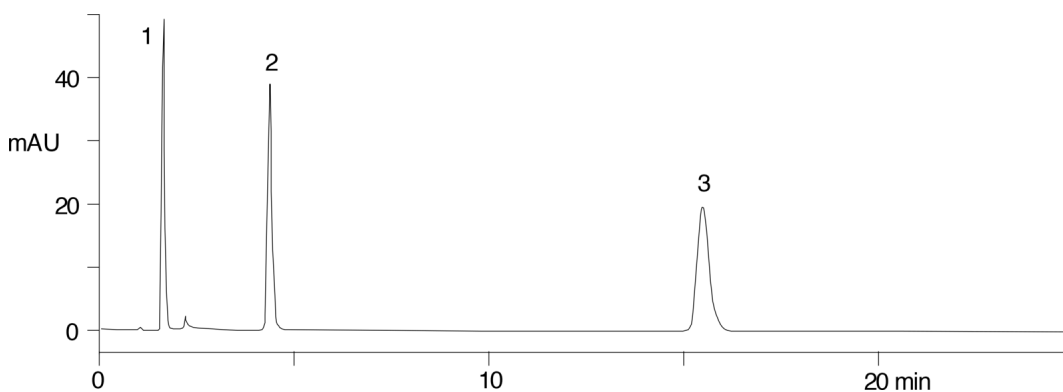
- SecurityGuard Cartridges, C18 4 x 3.0mm, 10/Pk Part No.: AJ0-4287

- Holder Part No.: KJ0-4282



Products used in this application:

HyperClone[™]



ANALYTES:

- 1 Thiourea
- 2 Dimethylphthalate
- 3 Toluene

