

# HPLC Application

ID No.: 14746

## Carbohydrate Mix 2 (AL0-3036)

**Column:** Rezex<sup>™</sup> RPM-Monosaccharide Pb+2 (8%), LC Column 300 x 7.8 mm, Ea

**Dimensions:** 300 x 7.8 mm ID

**Order No:** 00H-0135-K0

**Elution Type:** Isocratic

**Eluent A:** Water

Gradient	Step No.	Time (min)	Pct A
Profile:	1	0	100

**Flow Rate:** 0.6 mL/min

**Col. Temp.:** 85 °C

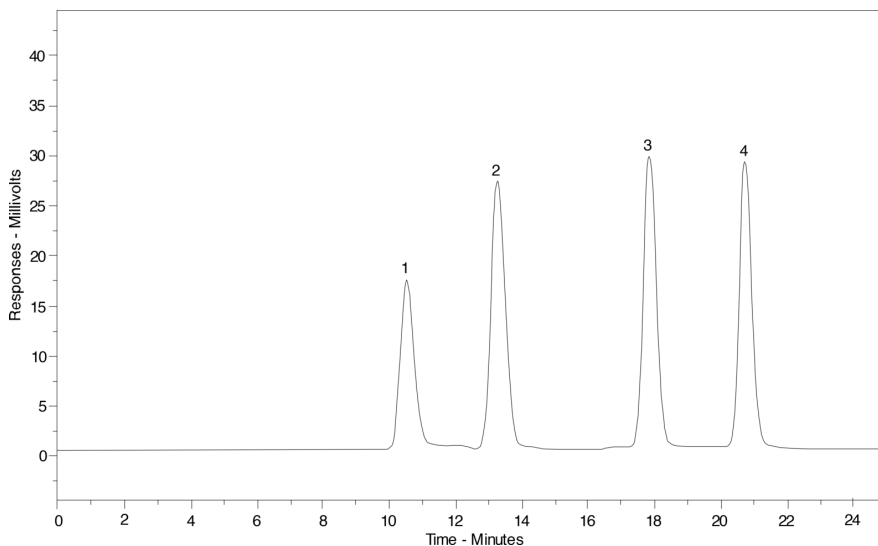
**Detection:** Refractive Index (RI) @ nm (85 °C)

**Analyst Note:** This standard is used to test the following HPLC columns: REZEX RPM (Pb Monosaccharide) and RHM (H Monosaccharide)

NOTE: Separation conditions and results may vary for your column. Contact your Technical Representative.



Products used in this application:



### ANALYTES:

- 1** Melezitose  
Retention Time: 10.56 min
- 2** Glucose  
Retention Time: 13.32 min
- 3** Fructose  
Retention Time: 17.89 min
- 4** Ribitol  
Retention Time: 20.77 min

