

# HPLC Application

ID No.: 14750

## Cation-Exchange Std. (AL0-3040)

**Column:** Luna® 5 µm SCX 100 Å, LC Column 250 x 4.6 mm, Ea

**Dimensions:** 250 x 4.6 mm ID

**Order No:** 00G-4398-E0

**Elution Type:** Isocratic

**Eluent A:** 0.15M (NH<sub>4</sub>)<sub>2</sub>H<sub>2</sub>PO<sub>4</sub>, pH 6.0

Gradient Profile:	Step No.	Time (min)	Pct A
	1	0	100

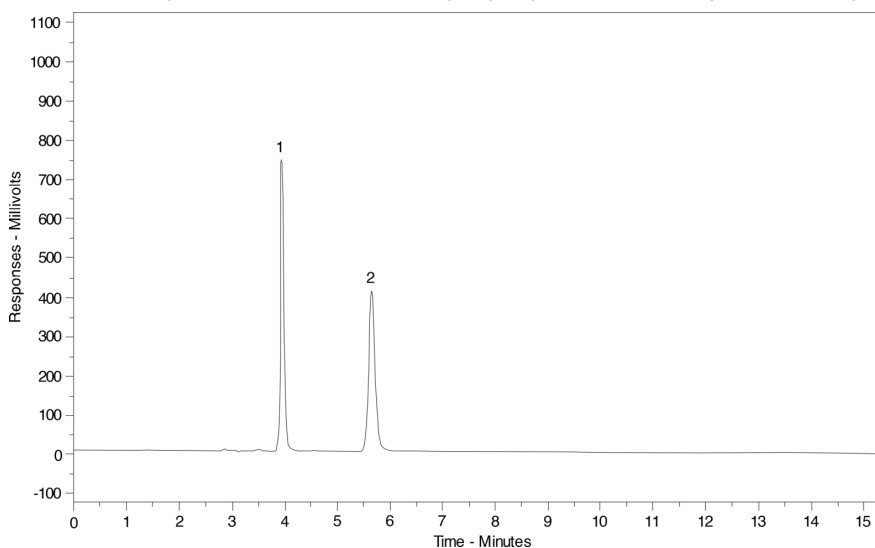
**Flow Rate:** 1 mL/min

**Col. Temp.:** ambient

**Detection:** UV-Vis Abs.-Variable Wave.(UV) @ 254 nm (ambient)

**Analyst Note:** This standard is used to test the following Phenomenex silica-based ion-exchange columns:  
SCX, SA, CM.

NOTE: Separation conditions and results may vary for your column. Contact your Technical Representative.



### ANALYTES:

1 Uracil

Retention Time: 3.97 min

2 Cytosine

Retention Time: 5.66 min



Products used in this application:

