

HPLC Application

ID No.: 14757

Chiral Test Mix 3 (AL0-3048)

Column: Chirex[®] (S)-VAL and (R)-NEA, LC Column 250 x 4.6 mm, Ea

Dimensions: 250 x 4.6 mm ID

Order No: 00G-3014-E0

Elution Type: Isocratic

Eluent A: Hexane

Eluent B: Isopropanol

Eluent C: Ethanol

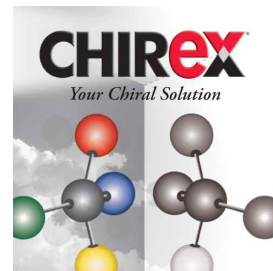
Gradient Profile:	Step No.	Time (min)	Pct A	Pct B	Pct C
	1	0	70	20	10

Flow Rate: 1 mL/min

Col. Temp.: ambient

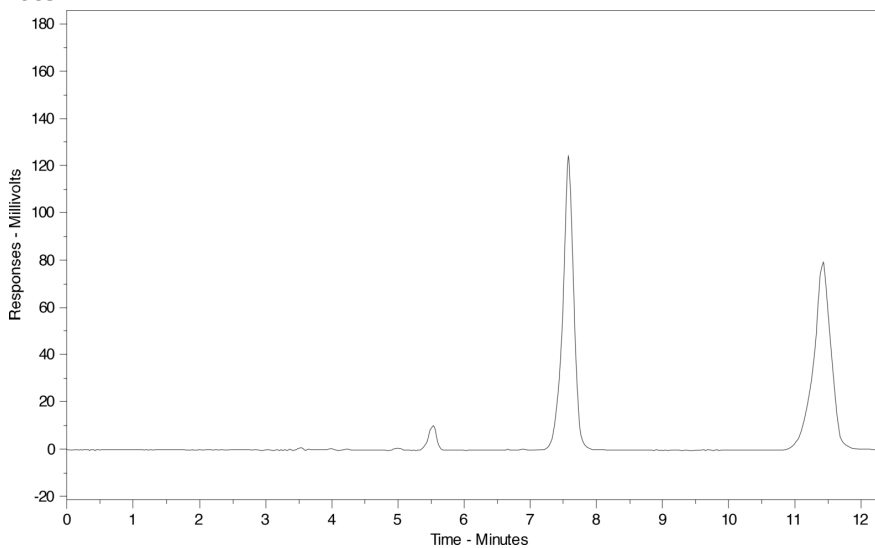
Detection: UV-Vis Abs.-Variable Wave.(UV) @ 254 nm (ambient)

Analyst Note: This standard is used to test the following Chirex columns: Phases 3014, 3018, 3019, 3020 and 3022.



Products used in this application:

CHIREX[®]



ANALYTES:

- 1** (R)-(-)-N-(3,5-Dinitrobenzoyl)-alpha-methylbenzylamine
Retention Time: 7.61 min
- 2** (S)-(+)-N-(3,5-Dinitrobenzoyl)-alpha-methylbenzylamine
Retention Time: 11.44 min

