

# HPLC Application

ID No.: 14767

## Tryptic Digest of Cytochrome c on Luna SCX

**Column:** Luna® 5 µm SCX 100 Å, LC Column 150 x 4.6 mm, Ea

**Dimensions:** 150 x 4.6 mm ID

**Order No:** 00F-4398-E0

**Elution Type:** Gradient

**Eluent A:** 20mM KPhos pH 2.5 + 25% Acetonitrile

**Eluent B:** A + 350mM KCl

Gradient Profile:	Step No.	Time (min)	Pct A	Pct B
	1	1	100	0
	2	50	0	100

**Flow Rate:** 1 mL/min

**Col. Temp.:** 30 °C

**Detection:** UV-Vis Abs.-Variable Wave.(UV) @ nm (ambient)

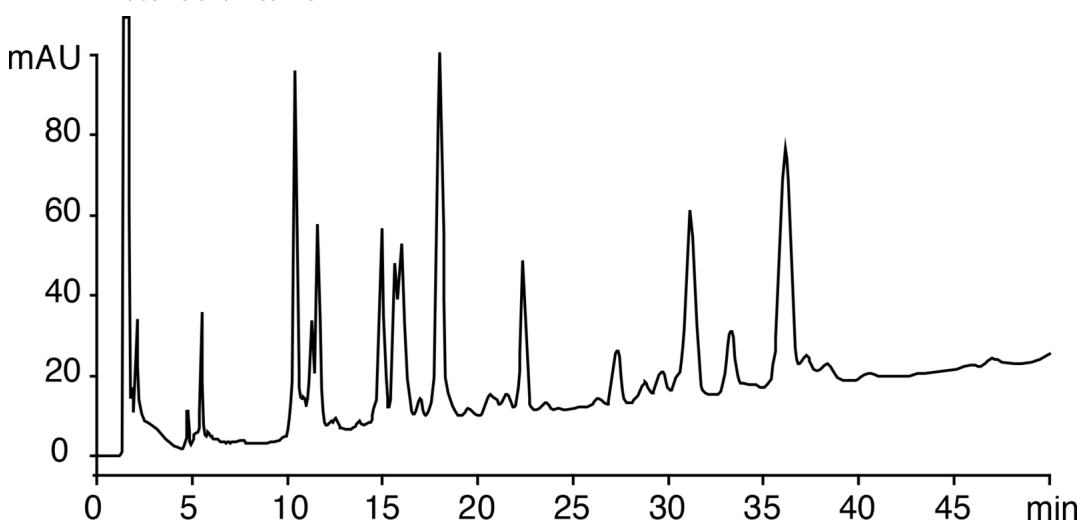
**Analyst Note:** SecurityGuard™ Guard Cartridge System extends column lifetime.

- SecurityGuard Cartridges, SCX 4 x 3.0mm, 10/Pk Part No.: AJ0-4308

- Holder Part No.: KJ0-4282



Products used in this application:



### ANALYTES:

1 Cytochrome c

