

GC Application

ID No.: 14780

EPA Method 8100: PAH's on ZB-35 30x0.25x0.25

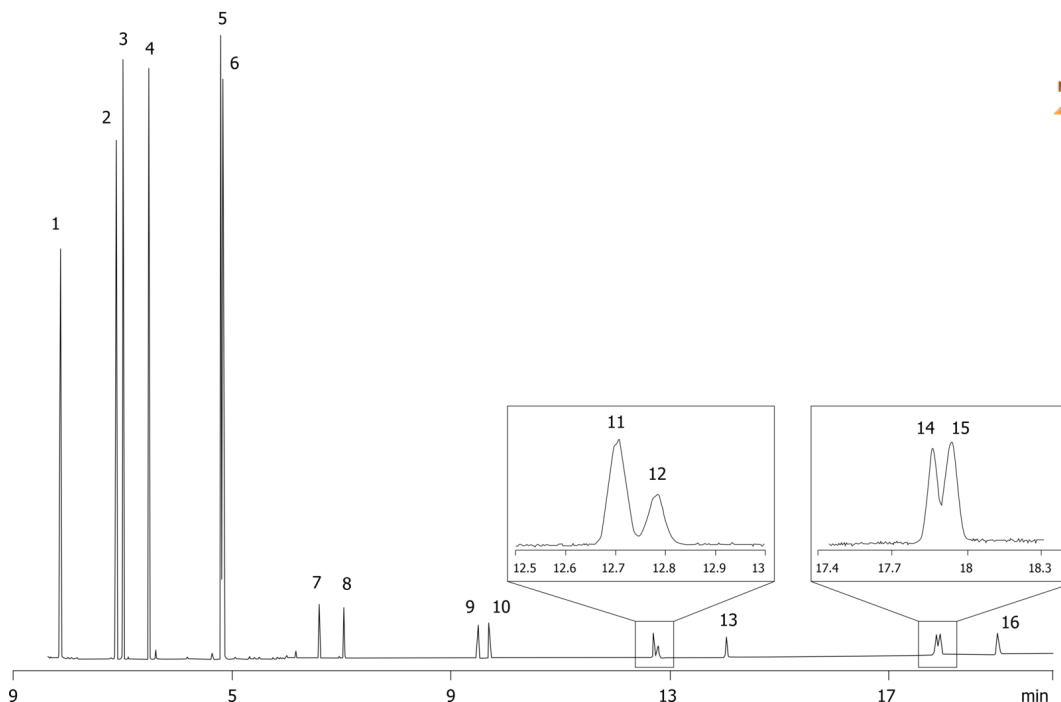
Column: Zebtron™ ZB-35, GC Cap. Column 30 m x 0.25 mm x 0.25 μm, Ea
Phase: 35% Phenyl 65% Dimethylpolysiloxane
Dimensions: 30 meters x 0.25 mm x 0.25 μm
Order No: 7HG-G003-11
Oven Profile: 170°C to 240°C at 15°C/min to 275°C at 4°C/min to 320°C at 10°C/min

Carrier Gas: Constant Flow Helium, 1.4 mL/min
Injection: Split 20:1 1 μL @ 260°C
Detection: Mass Selective (MSD) (180°C)

14780



Products used in this application:



EPA Method 8100: PAH's on ZB-35 30x0.25x0.25

ANALYTES:

- 1 Naphthalene
- 2 Acenaphthylene
- 3 Acenaphthene
- 4 Fluorene
- 5 Phenanthrene
- 6 Anthracene
- 7 Fluoranthene
- 8 Pyrene
- 9 Benz[a]anthracene
- 10 Chrysene
- 11 Benzo[b]fluoranthene
- 12 Benzo[k]fluoranthene
- 13 Benzo[a]pyrene
- 14 Dibenz[a,h]anthracene
- 15 Indeno[1,2,3-cd]pyrene
- 16 Benzo[g,h,i]perylene

