

GC Application

ID No.: 14782

EPA Method 8100: PAH's on ZB-1 30 0.25 0.25

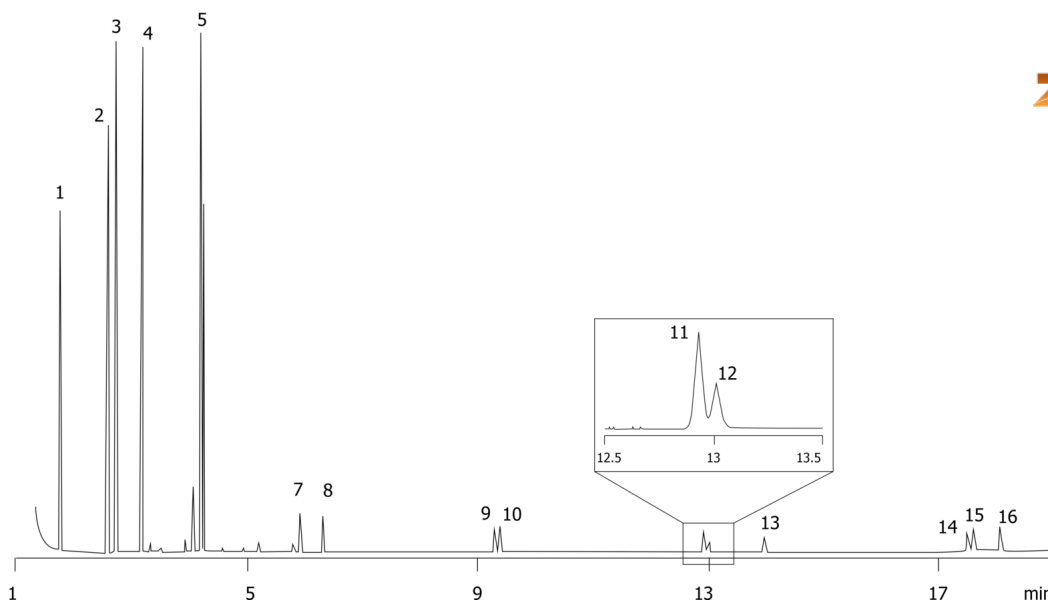
Column: Zebtron™ ZB-1, GC Cap. Column 30 m x 0.25 mm x 0.25 µm, Ea
Phase: 100% Dimethylpolysiloxane
Dimensions: 30 meters x 0.25 mm x 0.25 µm
Order No: 7HG-G001-11
Oven Profile: 160°C to 230°C at 15°C/min to 270°C at 4°C/min to 320°C at 10°C/min

Carrier Gas: Constant Flow Helium, 1.4 mL/min
Injection: split 20:1 1 µL @ 260°C
Detection: Mass Selective (MSD) (180°C)

14782



Products used in this application:



EPA Method 8100: PAH's on ZB-1 30 0.25 0.25

ANALYTES:

- 1 Naphthalene
- 2 Acenaphthylene
- 3 Acenaphthene
- 4 Fluorene
- 5 Phenanthrene
- 6 Anthracene
- 7 Fluoranthene
- 8 Pyrene
- 9 Benz[a]anthracene
- 10 Chrysene
- 11 Benzo[b]fluoranthene
- 12 Benzo[k]fluoranthene
- 13 Benzo[a]pyrene
- 14 Benzo[g,h,i]perylene
- 15 Dibenz[a,h]anthracene
- 16 Indeno[1,2,3-cd]pyrene

