

# GC Application

ID No.: 14791

## Aliphatic Amines on ZB-1701

**Column:** Zebtron<sup>™</sup> ZB-1701, GC Cap. Column 30 m x 0.25 mm x 0.25 μm, Ea

**Phase:** 14% Cyanopropylphenyl 86% Dimethylpolysiloxane

**Dimensions:** 30 meters x 0.25 mm x 0.25 μm

**Order No:** 7HG-G006-11

**Oven Profile:** 40°C for 3min to 130°C at 30°C/min to 220°C at 15°C/min

**Carrier Gas:** Constant Flow Helium, 1 mL/min

**Injection:** Split 15:1 1 μL @ 220°C

**Detection:** Mass Selective (MSD) (180°C)

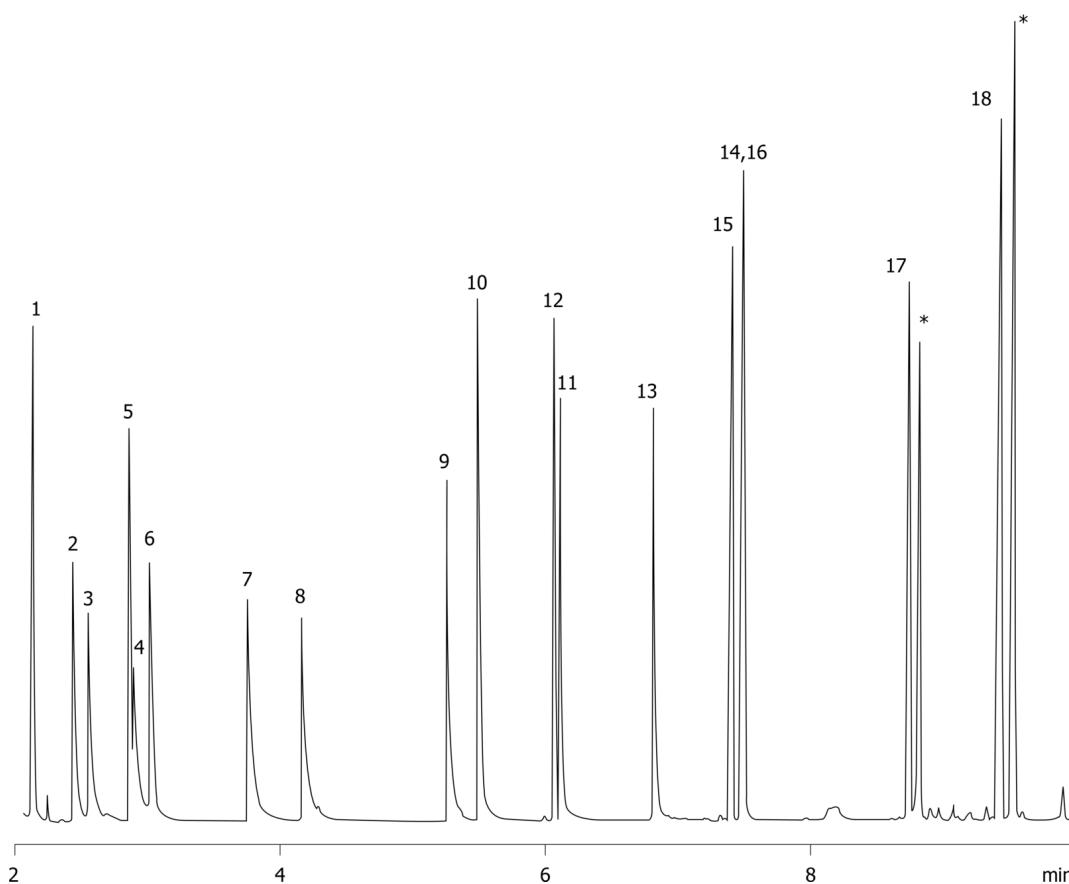
**Detector Info:** full scan

**Analyst Note:** Analytes are at 1.58mg/mL each. \* Indicates contaminants.

14791



Products used in this application:



## Aliphatic Amines on ZB-1701

### ANALYTES:

- 1 tert-Butylamine
- 2 sec-Butylamine
- 3 Isobutylamine
- 4 n-Butylamine
- 5 Diisopropylamine
- 6 Triethylamine
- 7 Isopentylamine
- 8 Pentylamine
- 9 Hexylamine
- 10 Cyclohexylamine
- 11 Heptylamine
- 12 Dibutylamine
- 13 Octylamine
- 14 Nonylamine
- 15 Dipentylamine
- 16 Tributylamine
- 17 Dihexylamine
- 18 Dicyclohexylamine

