

GC Application

ID No.: 14793

Alcohols on ZB-624 30x.32x1.8

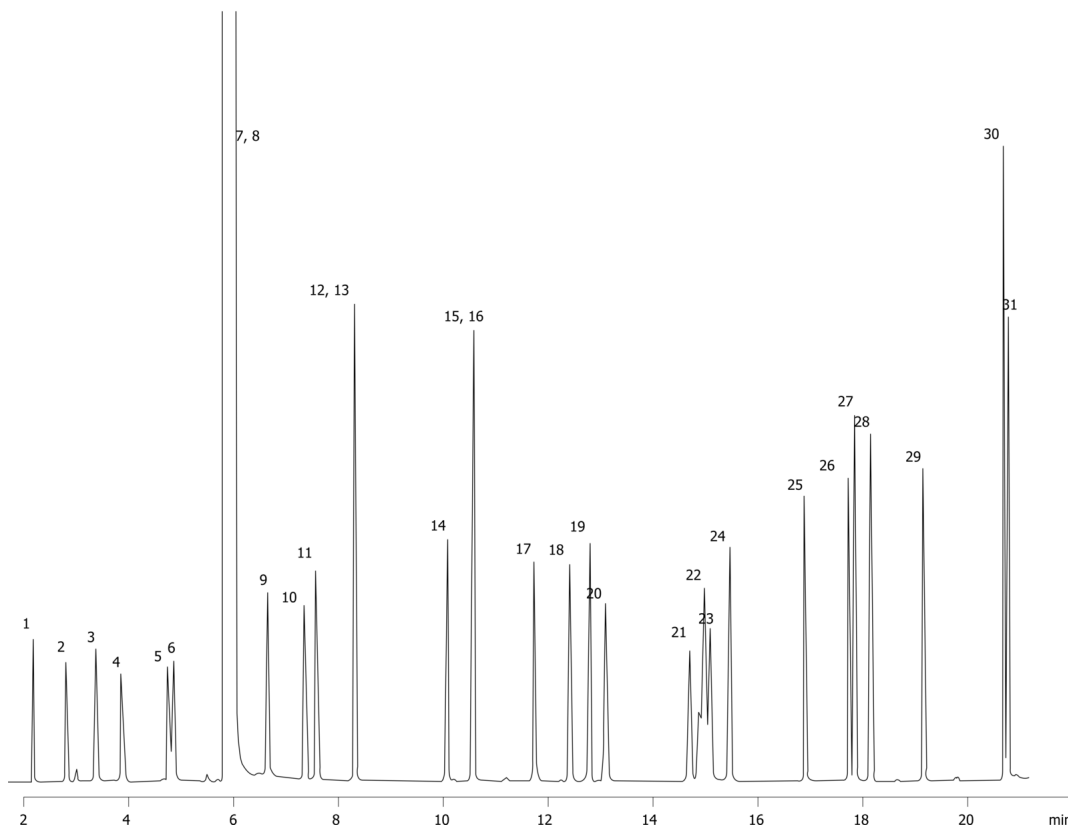
Column: Zebtron[™] ZB-624, GC Cap. Column 30 m x 0.32 mm x 1.80 μm, Ea
Phase: 6% Cyanopropylphenyl 94% Dimethylpolysiloxane
Dimensions: 30 meters x 0.32 mm x 1.8 μm
Order No: 7HM-G005-31
Oven Profile: 50°C for 4 min to 120°C at 10°C/min for 3.5 min to 220°C at 15°C/min

Carrier Gas: Constant Flow Helium, 1.2 mL/min
Injection: Split 20:1 1 μL @ 225°C
Detection: Mass Selective (MSD) (180°C)
Analyst Note: All analytes were 16ng on column except decanol at 32ng.

14793



Products used in this application:



Alcohols on ZB-624 30x.32x1.8

ANALYTES:

- 1 Methanol
- 2 Ethanol
- 3 Isopropanol
- 4 tert-Butanol
- 5 Allyl alcohol
- 6 Propanol
- 7 sec-Butanol
- 8 Chloroform
- 9 2-Methylpropanol
- 10 Methallyl alcohol
- 11 Butanol
- 12 3-Pentanol
- 13 2-Pentanol
- 14 Pentanol
- 15 3-Hexanol
- 16 Cyclopentanol
- 17 2-Ethyl-1-butanol
- 18 Hexanol
- 19 4-Heptanol
- 20 Cyclohexanol
- 21 2-Methylcyclohexanol
- 22 3-Methylcyclohexanol
- 23 4-Methylcyclohexanol
- 24 Heptanol
- 25 2-Ethyl-1-hexanol
- 26 Octanol
- 27 Phenylmethanol
- 28 Phenylethanol
- 29 2-Phenylethanol
- 30 Decanol
- 31 3-Phenyl-1-propanol

