

GC Application

ID No.: 14795

Alcohols on ZB-WAX 30x.32x0.5

Column: Zebron[™] ZB-WAX, GC Cap. Column 30 m x 0.32 mm x 0.50 μm, Ea

Phase: Polyethylene Glycol (PEG)

Dimensions: 30 meters x 0.32 mm x 0.5 μm

Order No: 7HM-G007-17

Oven Profile: 60°C for 4 min to 90°C at 7°C/min to 220°C at 15°C/min.

Carrier Gas: Constant Flow Helium, 1.2 mL/min

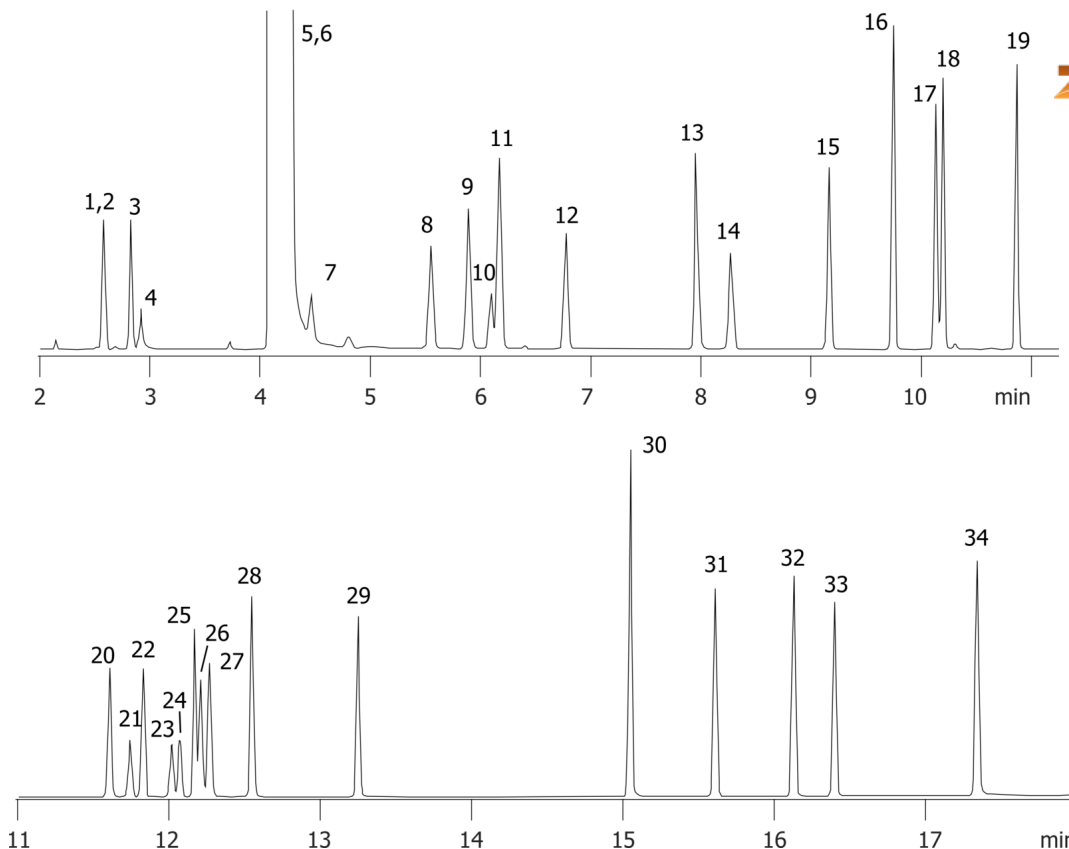
Injection: Split 20:1 1 μL @ 220°C

Detection: Mass Selective (MSD) (180°C)

14795



Products used in this application:



Alcohols on ZB-WAX 30x.32x0.5

ANALYTES:

- 1 Methanol
- 2 tert-Butanol
- 3 Isopropanol
- 4 Ethanol
- 5 Chloroform
- 6 sec-Butanol
- 7 Propanol
- 8 2-Methylpropanol
- 9 3-Pentanol
- 10 Allyl alcohol
- 11 2-Pentanol
- 12 Butanol
- 13 3-Hexanol
- 14 Methallyl alcohol
- 15 Pentanol
- 16 4-Heptanol
- 17 Cyclopentanol
- 18 2-Ethyl-1-butanol
- 19 Hexanol
- 20 Cyclohexanol
- 21 cis-2-Methylcyclohexanol
- 22 trans-2-Methylcyclohexanol
- 23 cis-3-Methylcyclohexanol
- 24 cis-4-Methylcyclohexanol
- 25 Heptanol
- 26 trans-3-Methylcyclohexanol
- 27 trans-4-Methylcyclohexanol
- 28 2-Ethyl-1-hexanol
- 29 Octanol
- 30 Decanol
- 31 Phenylethanol
- 32 Phenylmethanol
- 33 2-Phenylethanol
- 34 3-Phenyl-1-propanol

